

**The First International Sale  
of  
Dunlouisie Native Aberdeen-Angus Cattle**



**1:30 P.M. Local Time  
Monday, June 26, 2017  
at Kingston Farm, Forfar, Angus, Scotland**



# WELCOME



## Dunlouis Aberdeen-Angus Geordie, Julia, Duncan and Louise Soutar

Kingston Farm, Forfar, Angus, DD8 2RU Scotland

Phone: 44 01307 462784

Mobile: 44 07860 825324

*(If calling from the U.S., you must dial 011 first,  
to get outside the country)*

E-mail: gjsoutar@kingstonfrm.freemove.co.uk

Website: dunlouisangus.com



**Geordie, Julia, Duncan and Louise Soutar**

## SALE MANAGERS:

**UnitedAuctions**  
Scotland's Leading Livestock Auctioneers

### **PRESIDING AUCTIONEERS:**

David Leggat, David Brown, Raymond Kennedy

Official Auctioneers of the Aberdeen-Angus Cattle Society

### **United Auctions**

Stirling Agricultural Centre

Stirling FK9 4RN

Tel: +44 (0) 1786 473055

Email: [stirling@uagroup.co.uk](mailto:stirling@uagroup.co.uk) – [www.uagroup.co.uk](http://www.uagroup.co.uk)

**Buyers unable to attend the sale may send their bids  
to the Sale Managers or Auctioneer.**



### **American Angus Hall of Fame - (816) 532-0811**

TOM BURKE, KURT SCHAFF, and JEREMY HAAG  
AMERICAN ANGUS HALL OF FAME at the WORLD ANGUS  
HEADQUARTERS, Box 660, Smithville, MO 64089-0660.

Phone: (816) 532-0811, Fax (816) 532-0851.

E-Mail [angushall@earthlink.net](mailto:angushall@earthlink.net) – [www.angushall.com](http://www.angushall.com)



**Tom Burke**  
**(816) 853-2697**



**Kurt Schaff**  
**(816) 520-6447**



**Jeremy Haag**  
**(816) 516-1309**

**DUNLOUISE SALE CONDITIONS** The Dunlouis sale is held under United Auctions standard conditions of sale and under the auspices of the Aberdeen-Angus Cattle Society. National Beef Association breeding warranties apply.

**PAYMENT METHOD** All intending purchasers should pre-register with United Auctions, Stirling. This should be done by email, [mowens-smith@uagroup.co.uk](mailto:mowens-smith@uagroup.co.uk), or by contacting the Stirling office by 21 June. All purchases to be settled on day of sale by debit or credit card (charges may apply) or Stirling bank transfer.

The sale of both the live cattle and embryos will be conducted in guineas sterling (ie £1.05).

**EXPORT ELIGIBILITY** Live cattle are eligible for export to Europe. They are sold subject to retest with the Soutar family paying for the required blood tests.

Embryos are available for export worldwide. The embryos offered are stored with Paragon. Embryos will be sold per embryo with the buyer taking whatever number is catalogued in the lot.

**HERD HEALTH** The herd is a longstanding member of the Scottish Agricultural College Health Scheme (SAC).

**PRE-SALE INSPECTION** Potential buyers are invited to the viewing days on Saturday and Sunday, 24 and 25 June or alternatively by appointment with the Soutar family - 01307 462784 or mobile 07860 825324.

**FOOD AND REFRESHMENTS:** Complimentary lunch will be available.

**SALE BOOK PREPARED BY:** American Angus Hall of Fame

**The First International Sale  
of  
Dunlouse Native Aberdeen-Angus Cattle**

**1:30 P.M. Local Time  
Monday, June 26, 2017  
at Kingston Farm, Forfar, Angus, Scotland**

**Auctioneers' Foreword**

*United Auctions have a long and proud association with the Aberdeen-Angus breed going back to the 1860s when JM Fraser established the first sales of the breed at Perth.*

*We are delighted to be conducting the International Sale of Dunlouse Native Scottish Aberdeen-Angus on farm on Monday 26 June on behalf of the Soutar family.*

*The cattle and genetics on offer represent eight out of the herd's nine native Scottish lines. The cattle ooze that character which the breed is so famous for. This, combined with easy fleshing, low maintenance and superb beef, makes them a very attractive prospect.*

*This wonderful sale book has been produced by the Angus Hall of Fame, Smithville, Missouri, the well-known sale managers. They have been a great support in staging the sale and we look forward to working with them.*

*The cattle are eligible for export to Europe while the embryos offered have worldwide export status.*

*For those not attending in person, telephone bidding can be arranged through our office.*

*Should potential buyers have any queries, please do not hesitate to contact either ourselves or the Soutar family.*

*This sale is a truly unique event in the recent history of the breed. We look forward to welcoming you to the sale - not only will you see some great cattle, you will see some magnificent views of the hills and glens of Angus where our famous breed originated.*

**UnitedAuctions**  
Scotland's Leading Livestock Auctioneers

**David Brown      Raymond Kennedy**

*Fueled by a lifelong passion for the breed, Geordie Soutar began scouring the UK more than 20 years ago to assemble his elite Aberdeen-Angus herd from the last handful of 100% native origin females in existence. With a clear vision and steadfast determination, his mission was to build an outstanding herd with pedigrees that were of exclusive Scotch and UK breeding, along with the best of traditional Aberdeen-Angus qualities. In the process, he singlehandedly saved this rare and valuable breeding from complete extinction.*

*Located in Scotland in the county of Angus, the unique Dunlouse herd at Kingston Farm is situated at the heart of the breed's historic homeland. Through generations of both calculated and experimental breeding, the best of the herd was identified and propagated. Rich in classic Aberdeen-Angus qualities, the herd is a sterling example of the finest in breed and sex character, fertility, maternal function, fleshing ability, soundness, longevity and superior eating quality.*

*The robust quality and eternal strength of these timeless native cattle have attracted a growing audience of admirers with international media attention, worldwide semen and embryos sales and visitors from around the globe. This first International Sale of Dunlouse Native Aberdeen-Angus Cattle represents unprecedented opportunity...*

*by Tom Burke, Kurt Schaff and  
Jeremy Haag*



**DIRECTIONS TO KINGSTON FARM, Forfar, Angus, DD8 2RU**

M90 and A90 from Edinburgh - over the Forth road bridge towards Perth, then signs to Dundee. Keep on the same road. Then take dual carriageway (A90) from Dundee to Forfar and take the second turning to Forfar, approx. 12 miles (18 kms) from Dundee. You will see a MacDonald's on the right hand side as you are turning left off this A90 dual carriageway. Go round the roundabout and under the underpass into Forfar.

Travel approx. 1 mile into town to the traffic lights and go straight across into the town centre. At the 2nd (and last) set of lights in Forfar turn right onto the Carnoustie road B9128 towards Letham and the village of Kingsmuir.

Go straight over a silly little roundabout and head up the hill out of town.

After approx. 1 mile you come to the village of Kingsmuir and after the first bungalow turn right along Kingston Road. Do not go through the village. (Satellite Nav will try to take you on a further 1/4 mile so ignore it!)

50 yds. on the left you will see a big white stone and a sign for Kingston Farm.

The journey will take approximately 2 hours from Edinburgh.

Parking will be in a field adjacent to the sale ring, and there will be limited walking required throughout the day.

We have been asked about parking up trailers; plenty of room, although we will be able to help you with hauliers - Andrew Ewing and Ben Marsden.



# Dunlouis Native Origin Aberdeen-Angus





## Rich in Classic Aberdeen-Angus Qualities





## Dunlouse herd prepares for celebration Native Angus Sale



26 April 2017

Having established the Dunlouse herd of Native Angus cattle in 1995, Geordie and Julia Soutar and son and daughter, Duncan and Louise, are currently gearing up for a Celebration Sale of females, calves, young bulls and embryos, to be staged on farm at Kingston, Forfar, Monday 26th June at 1.30 pm - the first of its kind in over 50 years.

The sale, which sees United Auctions officiating as official auctioneers and the Angus Hall of Fame from the USA producing the unique catalogue, is expected to attract an incredible worldwide interest, all built on the Soutar family's many international contacts and the spread of Dunlouse genetics across the world.

Having started with two foundation females, one of which was Karen of Boghall, the couple decided early on that Native Angus had a great deal of appeal, with their distinctive style.

"We then bought Ejeta of Templehouse the following year, with all of our Ericas descending from this original cow," explains Geordie.

The great adventure of breeding these famous families resulted in it taking more than 10 years to acquire all the nine Native cow families now left in existence, a stark difference from the 1960s when there were 98 cow families, he adds.

Bob Anderson, past secretary of the Aberdeen-Angus Cattle Society, was an enthusiastic helper and compiled a list of Native Angus left in existence in the UK. These cow families, even after all this time, retain distinctive features, such as a 'Jipsey head' and a set of 'Cherry Blossom ears.'

The Cherry Blossoms - Cherry Bee 117 - bred three of the sires that Genex CRI bought a third semen interest in and proceeded to send this Native semen to every country in the world that breeds Angus. In addition, Native

heifers from all Dunlouse cow families have been sold throughout Europe, but particularly into Germany where it is more common to breed Angus "from field to fork," selling their packs of Angus beef direct to the public. The Soutar family has sold embryos to North and South America, Australia and Sweden, while at the same time working hard to keep the genetic gene pool wide so customers have a broad base to work from. "Our recent find of several other cow families, through the male line, trace back to families like the Georgina and Lady Haddo lines," explains Julia.

On the sire front Dunlouse Jipsey Earl is internationally the most successful UK bred bull ever and is a Pathfinder Sire in America, the only UK bull ever awarded this status, explains Geordie. "The data for this is submitted by ranchers who have used his semen, not by us the breeder, culminating in Jipsey Earl earning an impressive Milk EPD of +42 in the States, ranking him in the top 1% among 23,448 current sires, by measuring the productivity of his daughters."

A further six bulls have third share semen interests sold to Genex CRI, one of the premier semen companies in the world, giving the Dunlouse herd further international recognition. "We have also enjoyed a fruitful partnership with the Sinclair Cattle Company in America, establishing a joint herd of Native Angus cattle through the export of embryos," adds Geordie.



In 2004 John Roberts, founder of Multiplex, the building giant behind the Telstar Stadium in Sydney and the Wembley Stadium in London, paid Geordie and Julia a visit in his helicopter, purchasing 36 embryos to establish his Native Angus herd in Australia. That same year the couple sold a heifer to the Junck family of Vornagelhof Angus in Germany, in preparation for the lifting of the export ban. "Peter was the last breeder in Germany to import from the UK in 1989 and wanted to be the first to import again after the lifting of the ban," comments Julia. Rainer Mohl in Bavaria has a complete herd of Native Angus genetics.

But it's not just about historic sale success, as an exciting project is currently underway in Uruguay using a selection of Dunlouis Native semen. Dr. Guillermo Da Nava bought 1,500 units of semen for trial work in several herds and feedback has been extremely positive and as a result the Soutars now look forward to concentrating their efforts on breeding Native bulls from new bloodlines for further use in Uruguay and elsewhere.

"Despite the difficulties of importing into Argentina, we have also helped a breeder establish a Native herd just outside Buenos Aires. We're currently putting together an order of Dunlouis Jipsey Earl semen for the Narbaitz family who own CABA semen station in Argentina," adds Geordie.

The couple have also been working alongside Graham and Bettan of Yxskafkälens Angus in Sweden and last year exported 38 embryos. "As a result of an Open Day of their farm in Sweden, a large consignment of Native semen was sold to Estonia to moderate extreme cows and add fleshing ability.

So, from the frozen North of Sweden to the dry heats of Australia, these cattle work in many extreme conditions. "Our lines are also present in the South American tropics of Columbia to the hills of Northern Montana," adds Julia. The management ethos at Dunlouis is relatively simple, with a "back to basics" approach, Geordie explains: "A simple grass based diet is supplemented by turnips and hay in the winter. Calves aren't fed creep at grass so we can assess the cow's milking ability. We have a grass mixture specific to the farm where we incorporate three clovers, one early,

one mid and one late maturing."

All stock are sold off the farm with the couple choosing not to show to minimize health risk. "Cattle are not vaccinated so they are exportable and any young males deemed not suitable for breeding are castrated and sold as grass fed steers to MacDonald Bros Butchers, Perthshire.

The historic Celebration Sale on Monday 26th June will see the Soutar family offer in the region of 20 young heifers, 20 in calf heifers, eight young cows and or heifers with calves at foot, and will be a mix of proven home bred sires and new sires. The couple also intend offering five young bulls. All these are exportable to Europe.

Embryos will also be offered from most of the cow families, including some from Dunlouis Cherry Blossom Essie by Jipsey Earl, as well as Dunlouis Ruth by Cortachy Boy and some from Pumpkin by Cup Bearer. These latter two are extremely rare cow families. But in true Soutar family style, not only will the cattle prove to be an admirable attraction, the Soutars have designed their own Dunlouis tartan and items will be available on the day of the sale, including ties, dog collars, pashminas and many more pieces.

"We will also have Angus' only distillery, Glencadam of Brechin, offering a taste of their products and a chance to buy from their range of superb malts. A third stall will be Gammies of Forfar offering various country wear requirements," adds Julia. "We look forward to welcoming all interested breeders from across the globe, on a day which will hopefully prove to be yet another chapter in the Dunlouis history books."



**Dunlouis Jipsey Family**



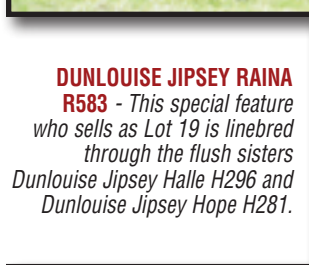
# Dunlouse Jipsey Family



**CANNAHARS JIPSEY YOKO Y485** - The powerful and popular female at the core of one of the breed's greatest and rarest families. She is one of the all-time greatest daughters of Betro of Classlochle, with a profound influence in the Dunlouse breeding program.



**DUNLOUSE JIPSEY HALLE H296** - This powerful daughter of Cannahars Jipsey Yoko Y485 by Emperor of Newark is well represented throughout this offering.



**DUNLOUSE JIPSEY RAINA R583** - This special feature who sells as Lot 19 is linebred through the flush sisters Dunlouse Jipsey Halle H296 and Dunlouse Jipsey Hope H281.



**DUNLOUSE JIPSEY RAINBOW R598** - This remarkable young female by the native outcross sire Ty-Isha Egonson is featured in this sale as Lot 22.



**DUNLOUSE JIPSEY CLOVA C095** - This great producing daughter of Cannahars Jipsey Yoko Y485 is best known as the dam of the powerful and proven Dunlouse Jipsey Earl E161.

One of the very best and rarest families in existence in the breed, the Jipsey family was founded in the Dunlouse program with the phenomenal mother/daughter pair, Jipsey Nova of Cannahars and Cannahars Jipsey Yoko Y485. Cannahars Jipsey Yoko Y485 proved to be one of the most powerful and impressive daughters of the Perth Reserve Supreme Champion Betro of Classlochle. Representing the best in linebreeding, her daughters and granddaughters have also left their mark, and her grandson, Dunlouse Jipsey Earl E161, is the great breeding bull who has seen international AI use through the Genex AI Stud and is now a recognized high maternal Pathfinder Sire in America. Members of this timeless family are featured.

## Dam Lineage

NAME/GEN/BREEDER	REG#	BIRTH	SIRE/SIRE REG#
Dunlouse Jipsey Clova C095 23. Geordie & Julia Soutar, Kingston, Forfar, Angus, Scotland	14898815 (54019670095)	5-26-2003	Bernardo of Classlochle (MLU.Y5.01)
Cannahars Jipsey Yoko Y485 22. J.&G. Sharman, Cannahars, Whitecairns, Aberdeenshire, Scotland	15726441 (AD020900485)	3-8-1999	Betro of Classlochle (MLU.A46.03)
Jipsey Nova of Cannahars 21. J.&G. Sharman, Cannahars, Whitecairns, Aberdeenshire, Scotland	(SUI.N6.14)	2-23-1989	Brendan of Classlochle (MLU.D30.06)
Jipsey Fairy 4 of Breakachy 20. Iain R. Thomson, Breakachy, Beaully, Inverness-shire, Scotland	(TIR.C27.05)	1-20-1980	Woodview Rorie (SUW.Z7.02)
Jipsey Fairy of Breakachy 19. Iain R. Thomson, Breakachy, Beaully, Inverness-shire, Scotland	(TIR.Y3.01)	12-24-1975	Beaufort of Classlochle (MLU.U10.97)
Jipsey Fairy 11 of Cullisse 18. G. & C. MacKenzie, Cullisse, Nigg Station, Ross-shire, Scotland	(MKU.U3.97)	1-29-1972	Eboy of Laggan (200296)
Jipsey Fairy 3rd of Cullisse 17. G. & C. MacKenzie, Cullisse, Nigg Station, Ross-shire, Scotland	(193037)	12-9-1959	Black Prince of Greenyards (152989)
Jipsey Heatherbell of Glassaugh 16. John A. Allan, Glassaugh, Portsoy, Banffshire, Scotland	(156755)	3-18-1952	Earnest of Glassaugh (135966)
Jipsey Heather Lass 15. A. & A.A. Whyte, Spott, Kirriemuir, Angus, Scotland	(129975)	1-8-1941	Hayston Gurma (104814)
Jipsey Juno of Dall 14. Donald McDougall, Dall, Killin, Perthshire, Scotland	(116217)	12-1-1936	Jipsey A1 (84688)
Jipsey Rose of Dall 13. Donald McDougall, Dall, Killin, Perthshire, Scotland	(106377)	1-22-1934	Potifer of Dall (75096)
Jipsey Proud Lassie 12. Archibald Whyte, Spott, Kirriemuir, Forfarshire, Scotland	(82741)	3-28-1926	Hayston Bonus (50678)
Jipsey Proud Lass 11. Archibald Whyte, Spott, Kirriemuir, Forfarshire, Scotland	(73166)	1-25-1922	Pinkys Plum (48916)
Jipsey Verbena 10. Archibald Whyte, Spott, Kirriemuir, Forfarshire, Scotland	(63680)	3-30-1918	Heath Laddie (39764)
Jipsey Victorine 9. William Whyte, Glamis/Spott, Kirriemuir, Forfarshire, Scotland	(55465)	4-6-1914	Proud Patriot (33770)
Jipsey Victoria 8. William Whyte, Glamis/Spott, Kirriemuir, Forfarshire, Scotland	(49925)	12-20-1910	Verderer (28813)
Jipsey Evelyn 7. William Whyte, Glamis/Spott, Kirriemuir, Forfarshire, Scotland	(34860)	9-11-1901	Eryx of Ballindalloch (16548)
Jezebel of Spott 6. William Whyte, Spott, Kirriemuir, Forfarshire, Scotland	(14483)	1-10-1888	Rover of Powrie 39400 (4991)
Juddy 2nd 5. William Whyte, Spott, Kirriemuir, Forfarshire, Scotland	50047 (7960)	2-5-1883	Dreadnought 5520 (1844)
Juddy 4. William Whyte, Spott, Kirriemuir, Forfarshire, Scotland	41363 (4717)	2-18-1880	Khan 3523 (1262)
Jipsey 3. William Whyte, Spott, Kirriemuir, Forfarshire, Scotland	2396 (1767)	2-1873	Engineer 2406 (571)
Old Jip 2. Archibald Whyte, Braedownie, Kirriemuir, Forfarshire, Scotland	2397 (965)	1862	Othello 1967 (319)
Black Meg 1. Archibald Whyte, Braedownie, Kirriemuir, Forfarshire, Scotland	---	---	---



# Dunlouse Jipsey Earl E161 - Featured Sire



**DUNLOUSE JIPSEY EARL E161** - Reference Sire A

**A**

## Dunlouse Jipsey Earl E161

Birth Date: 26 July, 2005      Bull UK540196 300161      E161

Rockie of Woodview	Jian Rufus
Betro of Classlochie	Roberta of Lislimnaghan
#MLU.A46.03	Rambler of Newcroft
Bethrothed 19th of Classlochie	Bethrothed 3rd of Classlochie
Bernardo of Classlochie	Rambler of Newcroft
Dunlouse Jipsey Clova C095	Bethrothed of Balmyre
#UK540196 700095	Betro of Classlochie
Cannahars Jipsey Yoko Y485	Jipsey Nova of Cannahars

### FOR REFERENCE ONLY.

This highly linebred sire stamps his progeny with a predictable and pleasing phenotype with their own unique and unmistakable look of quality and classic Aberdeen-Angus appeal.

Dunlouse Jipsey Earl E161 has seen substantial international success after headlining the group of Dunlouse sires enrolled in the Genex AI Stud.

Now a recognized and proven sire of calving-ease, maternal strength, muscle, fleshing ability, fertility and breed character, Dunlouse Jipsey Earl E161 has earned the prestigious Pathfinder Sire designation in America where he ranks among the breed's most elite for Calving-Ease Direct (CED), Birth Weight EPD and Milk EPD, along with favorable rankings for Dry Matter Intake (DMI), Docility (DOC), Heifer Pregnancy (HP), Calving-Ease Maternal (CEM), \$Energy (\$EN), Ribeye (RE), \$Weaning (\$W) and \$Yield Grade (\$YG), with more than 1,000 progeny evaluated in the Angus Herd Improvement Records (AHIR) program and 340 daughters in production.

Dunlouse Jipsey Earl E161 is by the great breeding bull, Betro of Classlochie, and he shares the same sire of his powerful grandam, Cannahars Jipsey Yoko Y485, with a pedigree which also traces four times to Rambler of Newcroft, twice to Rockie of Woodview and once to his full brother, Woodview Rorie, and five times to the Bethrothed family.



**DUNLOUSE RUTH H278 & DUNLOUSE JIPSEY HALLE H296** - Respectively, daughter and maternal sister to the dam of Reference Sire A.



**DUNLOUSE MISS BURGESS L418** - Daughter of Reference Sire A.



# Dunlouse Erica Family



**DUNLOUSE EMMA B070** - This fantastic daughter of Dunlouse Elmarie Y071 by Evesund of Dupplin, records a progeny ribeye ratio of 105 on 12 head, for a valuable combination of added muscle with femininity and udder quality.



## EJETA OF TEMPLEHOUSE

- The foundation of the Erica family in the Dunlouse program, she lived to be 19 years of age.

## DUNLOUSE EXCALIBUR Y070

- The Genex proven sire from Ejeta of Templehouse by Evesund of Dupplin.



**DUNLOUSE EVE** - Full sister to Dunlouse Excalibur Y070 and Dunlouse Evesund Y069 from Ejeta of Templehouse by Evesund of Dupplin.



**DUNLOUSE ELARA A046** - This awesome female with a progeny ribeye ratio of 109 on 18 head evaluated by ultrasound in America, represents the epitome of Scotch type and quality. She is the dam of the Genex sire Dunlouse Shot of Scotch.

## DUNLOUSE ELISSA A022

- This daughter of Ejeta of Templehouse by Betro of Classlochie is from the cherished collection of full sisters who also include Dunlouse Elmarie Y071, Dunlouse Ejeta C105 and Dunlouse Ellen E149.



## DUNLOUSE ERICA D121

- This daughter of Dunlouse Elissa A022 by Dunlouse Kinsman is prominently represented in this sale offering.

**DUNLOUSE ELMARIE Y071** - The productive dam of the phenomenal females Dunlouse Elara A046 and Dunlouse Emma B070, from the mating of Ejeta of Templehouse by Betro of Classlochie.



## DUNLOUSE EJETA C105

- This daughter of Ejeta of Templehouse by Betro of Classlochie is a full sister to Dunlouse Elmarie Y071, Dunlouse Elissa A022 and Dunlouse Ellen E149.

**DUNLOUSE SHOT OF SCOTCH** - This Genex sire was proudly displayed at the 2009 World Angus Forum in Canada, from Dunlouse Elara A046 by Dunlouse Kinsman.



## DUNLOUSE ENIGMA R578

- This Dunlouse herd sire by Dunlouse Jipsey Earl E161 is from Dunlouse Elfie J322, a daughter of Dunlouse Elara A046 by Dunlouse Commander Bond F176.



# Dunlouse Erica Families

The two amazing Erica families in the Dunlouse herd stem from two important foundation females. The most prolific of these trace to Ejeta of Templehouse who was selected by Geordie Soutar as an original Dunlouse foundation female and went on to enjoy a long and productive life through 19 years of age. Her matings to Evesund of Dupplin produced the Genex sire Dunlouse Excalibur Y070, Dunlouse Evesund Y069 and Dunlouse Eve, while her matings to Betro of Classlochie produced four fantastic full sisters, Dunlouse Elmarie Y071, Dunlouse Elissa A022, Dunlouse Ejeta C105 and Dunlouse Ellen E149. Another equally valuable branch, the Eulimas, were founded upon Elluma Nerissa of Cannahars. She in turn produced the incredible Wicken of Haymount daughter, Dunlouse Eulima Chloe C097.

## Dam Lineage

NAME/GEN/BREEDER	REG#	BIRTH	SIRE/SIRE REG#
Dunlouse Elara A046	14898870 (UK540196700046)	8-12-2001	Evidence of Westmains (197101)
31. Geordie & Julia Soutar, Kingston, Forfar, Angus, Scotland			
Dunlouse Elmarie Y071	14900818 (A0033700071)	2-6-1999	Betro of Classlochie (MLU.A46.03)
30. Geordie & Julia Soutar, Kingston, Forfar, Angus, Scotland			
Ejeta of Templehouse	(HSA.L18.12)	12-1-1987	Bevy of Newark (WXM.H19.10)
29. Robert Hopkin, Townhead of Drumley, Ayrshire, Scotland			
Ejeta of Bankhead	(MCP.B31.04)	4-26-1979	Rockie of Woodview (SUW.X4.00)
28. Geo. McLaren, Bankhead of Kinloch, Meigle, Perthshire, Scotland			
Elnace of Bankhead	(MCP.Y8.01)	8-14-1975	Wilvisar of Haymount (AHK.V35.98)
27. Geo. McLaren, Bankhead of Kinloch, Meigle, Perthshire, Scotland			
Elvara of Bankhead	(MCP.U21.97)	1-20-1972	Rambler of Newcroft (194035)
26. Geo. McLaren, Bankhead of Kinloch, Meigle, Perthshire, Scotland			
Elanara 2nd of Bankhead	(210963)	1-2-1965	Just Eric of Eastfield (174907)
25. Geo. McLaren, Bankhead of Kinloch, Meigle, Perthshire, Scotland			
Elerasta 4th of Bankhead	(193086)	1-8-1960	Gayman of Greenyards (152991)
24. Geo. McLaren, B. of Kinloch, Meigle, Perthshire, Scotland			
Eleanor 3rd of Bankhead	(182974)	12-23-1957	Bedazzle of Bankhead (141926)
23. Geo. McLaren, B. of Kinloch, Meigle, Perthshire, Scotland			
Elerasta of Bankhead	(149778)	3-20-1949	Bulwark of Newhouse (122769)
22. Peter C. McLaren & Sons, B. of K., Meigle, Perthshire, Scotland			
Elerasta of Tillyrie	(139155)	12-27-1944	Eraser of Harviestoun (119168)
21. R.M. Reid, Tillyrie, Milnathort, Kinross-shire, Scotland			
Eleanor 6th of Tillyrie	(129459)	12-18-1940	Enrocador (87242)
20. R.M. Reid, Tillyrie, Milnathort, Kinross-shire, Scotland			
Eleanor 4th of Tillyrie	(120501)	1-12-1938	Edmonton of Bleaton (90678)
19. R.M. Reid, Tillyrie, Milnathort, Kinross-shire, Scotland			
Eleanor of Tillyrie	(106931)	12-1-1933	Ballintomb Bellman (66098)
18. R.M. Reid, Tillyrie, Milnathort, Kinross-shire, Scotland			
Eleanor 2nd of Tomdow	(96635)	1-17-1931	Evalus of Ballindalloch (64349)
17. James Gordon, Towmdow, Knockando, Morayshire, Scotland			
Elinora of Edzell	(80360)	3-12-1926	Erector of Candacraig (54599)
16. David R. Arnot, The Mains, Edzell, Forfarshire, Scotland			
Elinora of Curragh	(71926)	3-6-1922	Legion of Curragh (33437)
15. J.H. Greer, Curragh Grange, Curragh, Kildare, Ireland			
Elsie of Curragh	(56513)	2-22-1915	Emperor of Curragh (34383)
14. J.H. Greer, Curragh Grange, Curragh, Kildare, Ireland			
Ella of Curragh	(49049)	12-26-1910	Gloxin of Ballindalloch (28107)
13. J.H. Greer, Curragh Grange, Curragh, Kildare, Ireland			
Ella's Pride	(42561)	4-17-1907	Prelo (26140)
12. Alexander McLaren, Auchnaguie, Ballinluig, Perthshire, Scotland			
Ella of Auchnaguie	65431 (25838)	12-29-1896	Bion 36986 (11454)
11. Alexander McLaren, Auchnaguie, Ballinluig, Perthshire, Scotland			
Erica Ida	50071 (16723)	12-16-1889	Lord Ivory 26595 (6179)
10. Andrew MacKenzie, Dalmore, Alness, Ross-shire, Scotland			
Eleusa	50020 (12428)	12-11-1886	Erroll 7474 (2723)
9. Sir George M. Grant, Ballindalloch, Banffshire, Scotland			
Elkara	26585 (9926)	6-20-1884	Justice 854 (1462)
8. Sir George M. Grant, Ballindalloch, Banffshire, Scotland			
Electra	26584 (4186)	5-24-1879	Petrarch 923 (1258)
7. Sir George M. Grant, Ballindalloch, Banffshire, Scotland			
Eveline	2085 (3372)	2-10-1877	Judge 473 (1150)
6. Sir George M. Grant, Ballindalloch, Banffshire, Scotland			
Eva	525 (984)	2-27-1871	Victor of Ballindalloch 528 (403)
5. Sir George M. Grant, Ballindalloch, Banffshire, Scotland			
Eisa	526 (977)	1-17-1867	Trojan 198 (402)
4. Sir George M. Grant, Ballindalloch, Banffshire, Scotland			
Erica	184 (843)	5-4-1857	Cupbearer 64 (59)
3. J. Carnegie, Earl of Southesk, Kinnaird, Brechin, Angus, Scotland			
Emily	185 (332)	1852	Old Jock 126 (1)
2. Hugh Watson, Keillor, Newtyle, Coupar-Angus, Scotland			
Beauty	186	---	---
1. Hugh Watson, Keillor, Newtyle, Coupar-Angus, Scotland			



**DUNLOUSE EULIMA CHLOE C097** - This incredible cow by Wicken of Haymount is from the Dunlouse foundation female Elluma Nerissa of Cannahars.

**B**

## Dunlouse Emmisary N522

Birth Date: 4 June, 2013

Bull UK540196 700522

N522

Cavetown Jet (Imp)

Provider 4th of Drumlone

Enoch of Holm Eden

Cavetown Patsy 2nd

#SZD.W6.99

Eva of Holm Eden

Corby Ben

Esme of South Slealands

Evesund of Dupplin

Eblis of Classlochie

Dunlouse Emma B070

Evergreen 3rd of Dupplin

#UK540196 300070 Dunlouse Elmarie Y071

Betro of Classlochie

Ejeta of Templehouse

## FOR REFERENCE ONLY.

This featured Dunlouse herd sire from the Erica family is sired by the native outcross sire Enoch of Holm Eden.

His dam, Dunlouse Emma B070, is one of the all-time greatest achievements in the Dunlouse program, proven in her ability to transmit femininity and udder quality with added muscle and traditional breed character, blending the famous champions Evesund of Dupplin and Betro of Classlochie.

**C**

## Dunlouse Enigma R578

Birth Date: 11 March, 2015

Bull UK540196 0700578

R578

Betro of Classlochie

Rockie of Woodview

Dunlouse Jipsey Earl E161

Bethrothed 19th of Classlochie

#UK540196 300161

Dunlouse Jipsey Clova C095

Bernardo of Classlochie

Cannahars Jipsey Yoko Y485

Dunlouse Commander Bond F176

Wedderlie Evictor

Dunlouse Elfie J322

Champagne Cherry Bee B117

#UK540196 300322 Dunlouse Elara A046

Evidence of Westmains

Dunlouse Elmarie Y071

## FOR REFERENCE ONLY.

A Dunlouse junior herd sire with a pedigree that perfectly combines the Erica, Jipsey and Cherry Blossom families.

This bull's pedigree also combines the Genex proven sires Dunlouse Jipsey Earl E161 and Dunlouse Commander Bond F176, while descending from the awesome Dunlouse Elara A046 whose progeny include the Genex sire Dunlouse Shot of Scotch.



**DUNLOUSE EULIMA HANNA H256** - This intriguing linebred female by Wicken of Haymount is from a dam by Betro of Classlochie, while her grandam is the Wicken of Haymount daughter Dunlouse Eulima Chloe C097.



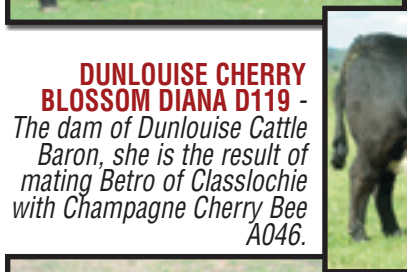
# DUNLOUISE CHERRY BLOSSOM FAMILY



**CHAMPAGNE CHERRY BEE B117** - The crown jewel of the prolific herd sire producing Cherry Blossom family and the dam of the Genex proven sires Dunlouse Cortachy Boy D137, Dunlouse Commander Bond F 176 and Dunlouse Cup Bearer H283.



**DUNLOUISE CHERRY BLOSSOM C100** - Maternal sister to Champagne Cherry Bee B117 from Cherry Bee W9 of Champagne.



**DUNLOUISE CHERRY BLOSSOM DIANA D119** - The dam of Dunlouse Cattle Baron, she is the result of mating Betro of Classloch with Champagne Cherry Bee A046.



**DUNLOUISE CATTLE BARON** - An international favorite while on display at the 2009 World Angus Forum in Canada, he went on to serve as a herd sire at Sinclair Cattle Company and later at Allen Creek Farm.



**CHAMPAGNE CHERRY BEE A046** - Full sister to Champagne Cherry Bee B117 from Cherry Bee W9 of Champagne by Ashley Elmighty. Her daughter, Dunlouse C Blossom Diana D119, produced Dunlouse Cattle Baron.

After enjoying immense popularity around the globe more than half of a century ago, the Cherry Blossom family was established in the Dunlouse program with Cherry Bee W9 of Champagne and her daughters who are full sisters, Champagne Cherry Bee B117 and Champagne Cherry Bee A046. Champagne Cherry Bee B117 is the dam of the Genex proven sires Dunlouse Cortachy Boy D137, Dunlouse Commander Bond F176 and Dunlouse Cup Bearer H283, while Champagne Cherry Bee A046 is the grandam of Dunlouse Cattle Baron who won popular acclaim while on display at the 2009 World Angus Forum.

## Dam Lineage

NAME/GEN/BREEDER	REG#	BIRTH	SIRE/SIRE REG#
Champagne Cherry Bee B117 24. Gordon Oliver, Upper Waterside, Disley, Cheshire, England	15726484 (UK161745700117)	5-14-2002	Ashley Elmighty (BKF.W29.99)
Cherry Bee W9 of Champagne 23. Gordon Oliver, Woodend, Macclesfield, Cheshire, England	15726439 (OLI.W9.22)	3-29-1997	Evan of Champagne (OLI.02.15)
Cherry Bee of Champagne 22. Gordon Oliver, Woodend, Macclesfield, Cheshire, England	(OLI.01.15)	3-9-1990	Proud Infidel of Westdrums (BOT.C6.05)
Rashiehall Cherry Bee E19 21. John D. Douglas, Balgray, Balbeggie, Perthshire, Scotland	(DDZ.E19.07)	3-12-1982	Woodview Remus (SUW.A8.03)
Cherry Blossom 76 of Peebles 20. Robert B. Crockatt, Peebles, Arbroath, Angus, Scotland	(CJB.V5.98)	6-23-1972	Klemm of Kininmonth (196495)
Cherry Blossom 54 of Peebles 19. Robert B. Crockatt, Peebles, Arbroath, Angus, Scotland	(216433)	2-22-1968	Paragon of Fordhouse (180469)
Cherry Blossom 33th of Peebles 18. J.B. Crockatt & Son, Peebles, Arbroath, Angus, Scotland	(204016)	1-25-1963	Prince Moirort of Kincardine (159180)
Cherry Blossom 25th of Peebles 17. J.B. Crockatt & Son, Peebles, Arbroath, Angus, Scotland	(191260)	1-2-1960	Perfect Boy of Ballindalloch (159776)
Cherry Blossom 19th of Peebles 16. J.B. Crockatt & Son, Peebles, Arbroath, Angus, Scotland	(171577)	4-12-1956	Prince Paul of Tooleys (148982)
Cherry Blossom 7th of Peebles 15. J.B. Crockatt, Peebles, Arbroath, Angus, Scotland	(148672)	1-23-1949	Rex of Cobairdy (125841)
Cherry Belle of Peebles 14. James B. Crockatt Jr., Peebles, Arbroath, Angus, Scotland	(121965)	2-18-1939	Enterprise of Logie (90956)
Cherry Blossom of Peebles 13. James B. Crockatt & Sons, Peebles, Arbroath, Angus, Scotland	(86459)	1-23-1928	Evolution of Beaton (54809)
Rosehaugh Cameo 12. J. Douglas Fletcher, Rosehaugh, Avoch, Ross-shire, Scotland	(62270)	12-9-1917	Prominent Prince (35118)
Lady Eckford 11. J. Douglas Fletcher, Rosehaugh, Avoch, Ross-shire, Scotland	(50627)	3-13-1912	Eckford (30348)
Craigio 27th of Banks 10. James Beddie, Banks, Strichen, Aberdeenshire, Scotland	(44897)	3-1-1909	Argus of Drip (22871)
Craigio 11th of Banks 9. James Beddie, Banks, Strichen, Aberdeenshire, Scotland	(36823)	1-28-1904	Loyalist of Morlich (14619)
Cyclamen of Banks 8. Alexander Beddie, Banks, Strichen, Aberdeenshire, Scotland	(27904)	5-15-1899	Manfred of Aldbar (13647)
Countess of Banks 7. Alexander Beddie, Banks, Strichen, Aberdeenshire, Scotland	(14627)	3-27-1888	Sir Peter 58564 (5020)
Craigio Polly 6. Alexander Beddie, Banks, Strichen, Aberdeenshire, Scotland	744264 (6485)	5-1882	Scottish Knight 3811 (1776)
Craigio Gem 5. Alexander Beddie, Banks, Strichen, Aberdeenshire, Scotland	58559 (5258)	3-1874	Colonel Gordon 2nd 4849 (1465)
Polly of Strichen 4. George Baird, Strichen, Aberdeenshire, Scotland	58558 (5265)	4-3-1867	Oscar 1820 (484)
Craigio 2nd of Strichen 3. George Baird, Strichen, Aberdeenshire, Scotland	5034 (5544)	3-4 1857	Craigio 425 (260)
Young Craigio 2. Capt. Carnegie, Craigio, Montrose, Angus, Scotland	---	---	---
Lady Craigio 1. Mr. Carnegie, Craigio, Montrose, Angus, Scotland	689 (99)	---	---



# Dunlouse Cherry Blossom Herd Sires

**D**

## Dunlouse Cortachy Boy D137

Birth Date: 28 September, 2004 Bull UK540196 700137 D137

Eroco of Bankhead	Rambler of Newcroft
Ashley Euler	Elanara 2nd of Bankhead
#BFX.X4.00	Euthedax of Douneside
Ashley Eulona	Ashley Eulina
Ashley Elmighty	Everstrike of Millhouse
Champagne Cherry Bee B117	Ashley Elsara
#UK161745 700117	Evan of Champagne
Cherry Bee W9 of Champagne	Cherry Bee of Champagne

### FOR REFERENCE ONLY.

The first of three proven maternal brothers who have served as herd sires in the Dunlouse program and as featured members of the Genex AI Stud where they enjoyed international admiration.

This son of the famous Champagne Cherry Bee B117 by Ashley Euler is a proven calving-ease and high marbling sire who ranks in the top 1% for \$Energy (\$EN), with nearly 750 progeny recorded in the Angus Herd Improvement Records (AHIR) program in America along with more than 200 progeny evaluated by ultrasound and more than 200 daughters in production.



**DUNLOUSE CORTACHY BOY D137** - Reference Sire D

**E**

## Dunlouse Commander Bond F176

Birth Date: 28 January, 2006 Bull UK540196 400176 F176

Newhouse Edwin Elko	Jesedax Eric of Douneside
Wedderlie Evictor	Newhouse Edwina Emily
#197003(AA)	Newhouse Excellence
Evista of Wedderlie	Evictress of Wedderlie
Ashley Elmighty	Everstrike of Millhouse
Champagne Cherry Bee B117	Ashley Elsara
#UK161745 700117	Evan of Champagne
Cherry Bee W9 of Champagne	Cherry Bee of Champagne

### FOR REFERENCE ONLY.

One of the unique and widely admired bulls ever produced in the Dunlouse program, Dunlouse Commander Bond F176 is a popular member of the trio of maternal brothers to have served in the Dunlouse herd sire battery as well as the Genex AI Stud after being collected at the renowned Cogent facility.

In America, he has more than 500 progeny recorded in the Angus Herd Improvement Records (AHIR) program along with more than 80 progeny evaluated by ultrasound and more than 125 daughters in production, ranking him in the most elite 1% for both Calving-Ease Direct (CED) and \$Energy (\$EN), along with a Birth Weight (BW) EPD in the lowest 10%.



**DUNLOUSE COMMANDER BOND F176** - Reference Sire E

**F**

## Dunlouse Cup Bearer H283

Birth Date: 20 June, 2008 Bull UK540196 600283 H283

Betro of Classlochie	Rockie of Woodview
Dunlouse Jipsey Earl E161	Bethrothed 19th of Classlochie
#UK540196 300161	Bernardo of Classlochie
Dunlouse Jipsey Clova C095	Cannahars Jipsey Yoko Y485
Ashley Elmighty	Everstrike of Millhouse
Champagne Cherry Bee B117	Ashley Elsara
#UK161745 700117	Evan of Champagne
Cherry Bee W9 of Champagne	Cherry Bee of Champagne

### FOR REFERENCE ONLY.

Dunlouse Cup Bearer H283 is the second-generation Genex proven sire who blends the best of the Cherry Blossom and Jipsey families from the mating of the Genex sire Dunlouse Jipsey Earl E161 from the incomparable Champagne Cherry Bee B117.

A powerful individual with added muscling, stoutness and correctness, Dunlouse Cup Bearer H283 is following in his sire's footsteps as a great breeding bull.

Dunlouse Cup Bearer H283 is a known red gene carrier who ranks in the top 1% for \$Energy (\$EN) through Angus Herd Improvement Records (AHIR) in America.



**DUNLOUSE CUP BEARER H283** - Reference Sire F

**G**

## Dunlouse Circuit Breaker S612

Birth Date: 26 March, 2016 Bull UK540196 600612 S612

Parsee of Doonholm	Primo of Hoprig
Dunlouse Raider N504	Parthenia of Doonholm
#UK540196 300504	Dunlouse Jipsey Earl E161
Dunlouse Ruth H278	Ruby 5th of Newcroft
Dunlouse Engineer K358	Evesund of Dupplin
Dunlouse Cherry Blossom M492	Dunlouse Emerald F205
#UK540196 500492	Evesund of Dupplin
Dunlouse Cherry Blossom K363	Dunlouse Cherry Blossom G252

### FOR REFERENCE ONLY.

This Dunlouse junior herd sire features an intriguing pedigree that combines several of the most prominent Dunlouse cow families into one package.

His sire, Dunlouse Raider N504, is the result mating the native outcross sire Parsee of Doonholm with the heralded Dunlouse Ruth H278.

His dam, Dunlouse Cherry Blossom M492, is a linebred double granddaughter of the twice Royal Highland Supreme Champion Evesund of Dupplin.



**DUNLOUSE CIRCUIT BREAKER S612** - Reference Sire G



# Dunlouse Ruby Family



**RUBY 5TH OF NEWCROFT** - The cherished foundation female of the rare Ruby family, she was acquired at 11 years of age.



**RAMBLER OF NEWCROFT**  
- One of the top breeding bulls of his generation from the Ruby family.

**ROBERTO OF NEWCROFT**  
- This son of Ruby 5th of Newcroft served as a Dunlouse herd sire.



**DUNLOUISE/SCC RUBY 925J** - This granddaughter of Ruby 5th of Newcroft by Dunlouse Jipsey Earl E161, was the \$20,000 top-seller of the Dunlouse/Sinclair Herd Dispersal in America in 2012 to Woodstone Angus of Texas.



**DUNLOUISE RUTH H278** - The dam of Dunlouse Raider N504.

The extremely rare Ruby family in the Dunlouse program stems from Ruby 5th of Newcroft who was acquired at 11 years of age by Geordie Soutar to serve as a foundation donor and she stems from a third dam who is a full sister to the great breeding bull Rambler of Newcroft, descending from the noted Ruby of Loanhead. Roberto of Newcroft, a son of Ruby 5th of Newcroft, was used in the Dunlouse breeding program, while a daughter produced the Dunlouse herd sire Dunlouse Raider N504, and a granddaughter was the \$20,000 top-selling female of the Dunlouse/Sinclair Herd Dispersal in 2012 to Woodstone Angus of Texas.

## Dam Lineage

NAME/GEN/BREEDER	REG#	BIRTH	SIRE/SIRE REG#
Ruby 5th of Newcroft 26. William Miller, Newcroft, Elgin, Morayshire, Scotland	15726405 (ZAP.T9.19)	11-27-1994	Wedderlie Evictor (1997003)
Ruby 4th of Newcroft 25. William Miller, Newcroft, Elgin, Morayshire, Scotland	(780107)	8-12-1981	Judate of Lower Delliefure (199157)
Ruby 3rd of Newcroft 24. William Miller, Newcroft, Elgin, Morayshire, Scotland	(990302)	10-10-1976	Erect 2nd of Dupplin (960799)
Ruby of Newcroft 23. William Miller, Newcroft, Elgin, Morayshire, Scotland	(218934)	12-6-1968	Endeavour of Hungerford (189832)
Ruby of Loanhead 22. Pasquale L. Civia, Loanhead, Elgin, Morayshire, Scotland	(209785)	2-20-1963	Jurist of Philorth (153291)
Remas Ruby of Barluack 21. George Geddes, Barluack, Rothes, Morayshire, Scotland	(186848)	6-20-1958	Bravado of Barluack (150396)
Ruby of Barluack 20. George Geddes, Barluack, Rothes, Morayshire, Scotland	(157654)	2-14-1952	Edward Eric (127801)
Rema's Ruby of Tillyrie 19. R.M. Reid, Tillyrie, Milnathort, Kinross-shire, Scotland	(134189)	1-8-1943	Enrocador (87242)
Rema's Belle of Tillyrie 18. R.M. Reid, Tillyrie, Milnathort, Kinross-shire, Scotland	(116914)	4-26-1937	Ballintomb Bellman (66098)
Rema's Maid 17. C.G. Robertson, Grantown, Inverness-shire, Scotland	(97925)	4-1-1931	Baronet of Mullabrack (96318)
Rema of Lochbank 16. Alfred W. Howison, Lochbank, Blairgowrie, Perthshire, Scotland	(78820)	5-16-1925	Romping Rover (51508)
Ruth of Lochbank 15. Alfred W. Howison, Lochbank, Blairgowrie, Perthshire, Scotland	(69748)	1-29-1918	Ides (38013)
Regina of Lochbank 14. James Howison, Lochbank, Blairgowrie, Perthshire, Scotland	(50920)	2-1-1908	Ederic 104114 (24313)
Russet of Careston 13. W. Shaw Adamson, Careston, Brechin, Forfarshire, Scotland	(34980)	4-12-1903	Price List 62938 (17069)
Ruthetta 3rd of Careston 12. W. Shaw Adamson, Careston, Brechin, Forfarshire, Scotland	(29516)	12-15-1899	Junior Rover 41374 (11796)
Ruthetta 11. Patrick Chalmers, Aldbar, Brechin, Forfarshire, Scotland	66840 (22748)	3-7-1895	Elmendorf 50153 (9942)
Rara 10. John H. Bridges, Ewell Court, Epsom, Surrey, England	61451 (14671)	2-3-1889	Lucretius 61450 (6197)
Rachel Elizabeth 9. John H. Bridges, Ewell Court, Horley, Surrey, England	61448 (10934)	5-6-1886	Esau 60214 (2084)
Iphegenia 8. John H. Bridges, Ewell Court, Horley, Surrey, England	61447 (6548)	10-18-1882	Ebony 2652 (1261)
Edith of Ewell 7. John H. Bridges, Ewell Court, Horley, Surrey, England	61446 (4863)	8-27-1878	Nicholas 2148 (1210)
Ethelinda 6. J.H. Bridges Jr., Ewell Court, Horley, Surrey, England	2651 (3356)	1-23-1876	Donald Bane 2655 (978)
Ruth 2d 5. William McCombie, Tillyfour, Aberdeenshire, Scotland	1836 (1783)	2-27-1872	Prince of Wales 2d 239 (394)
Ruth of Tillyfour 4. William McCombie, Tillyfour, Aberdeenshire, Scotland	648 (1169)	1865	Black Prince of Tillyfour 77 (366)
Beauty of Tillyfour 2d 3. Hugh Watson, Keillor, Newtyle, Coupar-Angus, Scotland	423 (1180)	---	Young Jock 249 (4)
Favorite 2. Hugh Watson, Keillor, Newtyle, Coupar-Angus, Scotland	114 (2)	---	Grey Breasted Jock 113 (2)
Old Favorite 1. Hugh Watson, Keillor, Newtyle, Coupar-Angus, Scotland	---	---	---



# Dunlouse Ruby and Nell Herd Sires

H

## Dunlouse Raider N504

Birth Date: 17 February, 2013	Bull UK540196 300504	N504
Parsee of Doonholm #199389(AA)	Primo of Hoprig Parthenia of Doonholm	Edwin Elvis of Thornton Paula of Hoprig Bahram of Broadleys Portia of Doonholm Betro of Classlochie Dunlouse Jipsey Clova C095 Wedderlie Evictor Ruby 4th of Newcroft
Dunlouse Ruth H278 #UK540196 100278	Dunlouse Jipsey Earl E161 Ruby 5th of Newcroft	

### FOR REFERENCE ONLY.

The Dunlouse proven sire from the mating of the native outcross sire Parsee of Doonholm from Dunlouse Ruth H278, a special favorite in the Dunlouse herd from the mating of the Genex proven sire Dunlouse Jipsey Earl E161 from the time-honored Ruby 5th of Newcroft. This great breeding bull is from the same family that also produced Rambler of Newcroft, one of the all-time great breeding bulls ever produced in the UK, as well as the Dunlouse herd sire Roberto of Newcroft.



DUNLOUSE RAIDER N504 - Reference Sire H

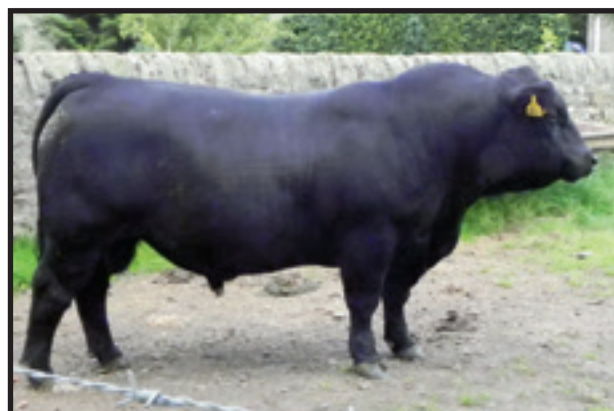
I

## Dunlouse Nevis L441

Birth Date: 25 July, 2011	Bull UK540196 300441	L441
Dunlouse Jipsey Earl E161 #UK540196 300161	Betro of Classlochie Dunlouse Jipsey Clova C095	Rockie of Woodview Bethrothed 19th of Classlochie Bernardo of Classlochie Cannahs Jipsey Yoko Y485 Everstrike of Millhouse Ashley Jewlass Erica Benbecula of Moorhouse Nella of Palterton
Budgehill Nena Y588 #UKV 314200588	Ashley Jewlasto Eric Budgehill Nena	

### FOR REFERENCE ONLY.

An early son of Dunlouse Jipsey Earl E161 used to accentuate the influence of his sire in the Dunlouse breeding program. Dunlouse Nevis L441 later sold to Robin and Alison Tuke and has since recorded 90 progeny in the Aberdeen-Angus Cattle Society. His dam, Budgehill Nena Y588, is an original Dunlouse foundation female from a time-tested native cow family of extreme rarity.



DUNLOUSE NEVIS L441 - Reference Sire I

J

## Dunlouse Nobleman P552

Birth Date: 26 April, 2014	Bull UK540196 200552	P552
Evesund of Dupplin #FLD.Y18.01	Eblis of Classlochie Evergreen 3rd of Dupplin	Rambler of Newcroft Ebony Ezzo of Rowley Islabank Juringo Eric Evergreen of Dupplin Wedderlie Evictor Champagne Cherry Bee B117 Ashley Jewlasto Eric Budgehill Nena
Dunlouse Nell K411 #UK540196 100411	Dunlouse Commander Bond F176 Budgehill Nena Y588	

### FOR REFERENCE ONLY.

Dunlouse Nobleman P552 is a young sire from the Nell family, sired by the twice Royal Highland Supreme Champion Evesund of Dupplin from a dam by the Genex sire Dunlouse Commander Bond F176. His dam is a maternal sister to Dunlouse Nevis L441 from the same family that also produced the Genex sire Dunlouse Red Native F207.



DUNLOUSE NOBLEMAN P552 - Reference Sire J

K

## Dunlouse Red Native F207

Birth Date: 12 October, 2006	Bull UK540196 700207	F207
Prattle of Haymount #198644(AA)	Ernest of Buchaam Particle of Haymount	Padora's Prince of Hungerford Eerie of Derculich Banner of Belladrum Paloona of Haymount Evesund of Dupplin Ejeta of Templehouse Betro of Classlochie Budgehill Nena
Eversfield Red Nena D252 #UK369690 300252	Dunlouse Excalibur Y070 Budgehill Nena Z008	

### FOR REFERENCE ONLY.

This noted member of the Genex AI Stud represents an outstanding genetic alternative for Red Angus cattle with 100% native origin roots. His sire, Prattle of Haymount, stems from a prestigious sire lineage and is backed by a dam by the famous Banner of Belladrum. Dunlouse Red Native F207 carries forward the Nell cow family from a dam by the Genex sire Dunlouse Excalibur Y070, stemming from Budgehill Nena Z008, a maternal sister to the Dunlouse foundation female Budgehill Nena Y588.



DUNLOUSE RED NATIVE F207 - Reference Sire K



# Dunlouse Nell Family



**DUNLOUISE NELL K411** - This daughter of the Dunlouse foundation female Budgehill Nena Y588 produced Dunlouse Nobleman P552.



**DUNLOUISE RED NATIVE F207** - Proven Red Angus sire from the Nell family.



**DUNLOUISE RED NELL K383** - This Red Angus daughter of Dunlouse Cup Bearer H283 produced Dunlouse Red Nessie M494.



**DUNLOUISE RED NESSIE M494** - This next generation Red Angus donor from the Nell family is from Dunlouse Red Nell K383 by Dunlouse Engineer K358.



**DUNLOUISE NINA N506** - This daughter of Dunlouse Nell K411 is the dam of the herd sire prospect who sells as Lot 41.

The Dunlouse Nell family is anchored by the Dunlouse foundation female Budgehill Nena Y588. This family has withstood the test of time and has continued to prosper in both the black and red sectors of the Dunlouse program. Most notably, this family produced the Genex sire Dunlouse Red Native F207 as well as the Dunlouse herd sires Dunlouse Nevis L441 and Dunlouse Nobleman P552, along with a number of impressive females.

## Dam Lineage

NAME/GEN/BREEDER	REG#	BIRTH	SIRE/SIRE REG#
Dunlouse Nell K411	(540146100411)	12-1-2010	Dunlouse Commander Bond F176
24. Geordie & Julia Soutar, Kingston, Forfar, Angus, Scotland			(UK540196400176)
Budgehill Nena Y588	(UKV314200588)	4-5-1999	Ashley Jewlasto Eric
23. Richard I.J. Phillips, Ashmill, Devon, England			(BFK.X33.00)
Budgehill Nena	(PHL.M4.13)	10-15-1988	Benbecula of Moorhouse
22. Ivor Phillips, Dousland, Devon, England			(FUD.J7.11)
Nella of Palterton	(MVM.D8.06)	12-10-1980	Greenyards Jeramy
21. E.C. McDonald & Son, Highfield, Derbyshire, England			(AJY.W1.99)
Nelia of Palterton	(215150)	4-1-1964	Prior of West Drums
20. E.C. McDonald & Son, Highfield, Derbyshire, England			(153377)
Norah of Palterton	(197838)	12-1-1960	Keeman of Greeyards
19. E.C. McDonald & Son, Highfield, Derbyshire, England			(145801)
Nereid of Thirlestane	(160584)	2-14-1953	Reveille of Fordhouse
18. E.L.S. Elliot, Thirlestane, Berwickshire, Scotland			(139743)
Nappy of Thirlestane	(154626)	1-28-1951	Edelwin of Connoquhie
17. Thomas Elliot, Thirlestane, Berwickshire, Scotland			(128906)
Nanda of Thirlestane	(146217)	12-16-1947	Elkin of Glogaburn
16. Thomas Elliot, Thirlestane, Berwickshire, Scotland			(119658)
Naomi of Thirlestane	(135310)	1-1-1944	Cuthbert of Cape Wrath
15. Thomas Elliot, Thirlestane, Berwickshire, Scotland			(116201)
Nancy of Thirlestane	(122218)	1-1-1939	Elbono of Addinston
14. Thomas Elliot, Thirlestane, Berwickshire, Scotland			(99361)
Nan 2nd of Downiehills	(86157)	3-1-1928	Gironda of Ballindalloch
13. James O. Booth, Downiehills, Aberdeenshire, Scotland			(41659)
Nona of Pitskelly	(77032)	1-4-1924	Mulben Eremit
12. J.H. Pattullo, Pitskelly, Carnoustie, Forfarshire, Scotland			(53212)
Nan of Pitskelly	(72498)	2-5-1922	Blurt
11. J.H. Pattullo, Pitskelly, Carnoustie, Forfarshire, Scotland			(45137)
Nancy of Theobalds	(58796)	3-13-1916	Ellis of Poles
10. Sir Headworth Meux, Theobalds, Herfordshire, England			(35889)
Neophyte of Theobalds	(52872)	2-10-1913	Idelamere
9. Sir Headworth Meux, Theobalds, Herfordshire, England			(22036)
Nyrella	(41759)	12-24-1906	Elsyn
8. Patrick Chalmers, Aldbar, Brechin, Forfarshire, Scotland			(23110)
Neophyte of Aldbar	(37003)	3-28-1904	Elshender
7. Patrick Chalmers, Aldbar, Brechin, Forfarshire, Scotland			(16523)
Nells Pride	(20279)	2-6-1893	Proud Englishman
6. Patrick Chalmers, Aldbar, Brechin, Forfarshire, Scotland			(9554)
Nell of Aldbar	(14727)	5-4-1888	Bondsman
5. Patrick Chalmers, Aldbar, Brechin, Forfarshire, Scotland			(5209)
Ellen of Aldbar	---	1879	Wattie of Ecclesgreig
4. Patrick Chalmers, Aldbar, Brechin, Forfarshire, Scotland			(3380)
Nelly of Aldbar	---	1869	Wizard of Dun
3. Patrick Chalmers, Aldbar, Brechin, Forfarshire, Scotland			(5809)
Helen of Aldbar	---	1863	Argos of Kinnaird
2. John I. Chalmers			(2461)
Aberdeen or Angus polled cow	---		---
1. ---			---



# Dunlouse Kindness Pride and Pride Families

The Kindness Pride family developed in the Dunlouse program stems from Karen of Boghall, the very first female selected by Geordie Soutar to serve as a Dunlouse foundation female in 1995. Her son, Dunlouse Kinsman, was an early Dunlouse featured sire whose semen sold through SEK Genetics. Another branch of the Pride family is anchored from a more recent foundation female, Eversfield Pumpkin F378.

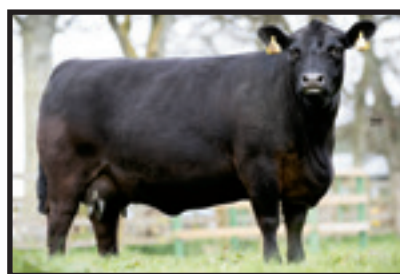
## Dam Lineage

NAME/GEN/BREEDER	REG#	BIRTH	SIRE/SIRE REG#
Dunlouse Kate D107 28. Geordie & Julia Soutar, Kingston, Forfar, Angus, Scotland	14898840 (UK540196500107)	1-2-2004	Dunlouse Excalibur Y070 +14615071 (UKA003700070)
Dunlouse Kara 27. Geordie & Julia Soutar, Kingston, Forfar, Angus, Scotland	(SGD.W18.22)	12-29-1997	Prince Propel of Addington (197461)
Karen of Boghall 26. James M. Clark, Boghall, Glasgow, Scotland	(WAP.L2.12)	3-2-1987	Emlyn of Newark (792808)
Korda 12th of Classlochie 25. Donald McLaren, Classlochie, Kinross, Fife, Scotland	(MLU.B18.04)	4-1-1979	Rockie of Woodview (970400)
Korda 6 of Classlochie 24. Donald McLaren, Classlochie, Kinross, Fife, Scotland	(MLU.W34.99)	4-4-1974	Rambler of Newcroft (194035)
Korda of Greenend 23. J.C. Todd, Greenend, St. Boswells, Roxburghshire, Scotland	(209145)	12-14-1963	Welkin of Haymount (170688)
Karna of Greenend 22. J.C. & J. Todd, Greenend, St. Boswells, Roxburghshire, Scotland	(189800)	12-15-1958	Newhouse Jewra Eric (157063)
Kartella of Greenend 21. J.C. Todd, Greenend, St. Boswells, Roxburghshire, Scotland	(174590)	12-16-1955	Windsor of Haymount (137837)
Kafka of Greenend 20. J.C. Todd, Greenend, St. Boswells, Roxburghshire, Scotland	(153432)	12-9-1949	Goodwin of Fordhouse (129685)
Kobisca of Fordafourie 19. Alexander C. Lee, Fordafourie, Aberdeenshire, Scotland	(141270)	3-17-1946	Gaffer Ebelon (120571)
Kobe 2nd of Balnastraid 18. Charles MacKay, Balnastraid, Inverness-shire, Scotland	(103197)	2-19-1933	Emerald of Balnastraid (73581)
Kobe of Skillymarno 17. John S. Grant, Skillymarno, Strichen, Aberdeenshire, Scotland	(90356)	12-12-1927	B Bummer (60691)
K Pride of Whiteside 16. Francis Gilbert, Whiteside, Alford, Aberdeenshire, Scotland	(58298)	4-6-1916	Enrico of Clury (35940)
K Pride 8th of Duthil 15. J.M. Allan, Easter Duthil, Carr Bridge, Inverness-shire, Scotland	(53623)	12-10-1913	British Mint (31518)
K Pride 2nd of Duthil 14. J.M. Allan, Easter Duthil, Carr Bridge, Inverness-shire, Scotland	(43229)	1-5-1908	Black Japan (22926)
Katoena 13. Sir George M. Grant, Ballindalloch, Banffshire, Scotland	(31943)	12-19-1900	Eblito 50098 (14306)
Karia 12. Sir George M. Grant, Ballindalloch, Banffshire, Scotland	(25496)	12-21-1896	Prospero of Dalmore 26599 (11208)
Kindred 11. Sir George M. Grant, Ballindalloch, Banffshire, Scotland	26590 (12436)	4-14-1887	Erroll 7474 (2723)
Kindness of Ballindalloch 10. Sir George M. Grant, Ballindalloch, Banffshire, Scotland	775 (1412)	1872	Clansman 105 (398)
Gem of Aboyne 9. James Skinner, Drumin, Ballindalloch, Morayshire, Scotland	776 (1595)	1869	Hero 341 (400)
Pride 8. William McCombie, Tillyfour, Aberdeenshire, Scotland	777 (957)	1866	President 4th 279 (368)
Pride of Aberdeen 3d 7. William McCombie, Tillyfour, Aberdeenshire, Scotland	37 (1168)	1864	Black Prince of Tillyfour 77 (366)
Pride of Aberdeen 6. William McCombie, Tillyfour, Aberdeenshire, Scotland	38 (581)	1857	Hanton 80 (228)
Charlotte 5. William McCombie, Tillyfour, Aberdeenshire, Scotland	39 (203)	1852	Angus 83 (45)
Lola Montes 4. William McCombie, Tillyfour, Aberdeenshire, Scotland	40 (208)	1847	Monarch 84 (44)
Queen Mother 3. William Fullerton, Ardvie, Brechin, Angus, Scotland	41 (348)	1843	Panmure 69 (51)
Queen of Ardvie 2. William Fullerton, Ardvie, Brechin, Angus, Scotland	42 (29)	1836	Captain 86 (97)
Black Meg 1. ---	43 (766)	---	---



**DUNLOUSE KATE D107** - Massive granddaughter of the Dunlouse foundation female Karen of Boghall.

**EVERSFIELD PUMPKIN F378** - The foundation female of the Dunlouse Pride family. She is the dam of the Dunlouse herd sire Dunlouse Patriot M456 and the sale features Dunlouse Pippa P544 and Dunlouse Primrose R574.



**DUNLOUSE PIPPA P544** - This powerful outcross female from the Dunlouse foundation Pride female Eversfield Pumpkin F378 is featured in this sale as Lot 3.

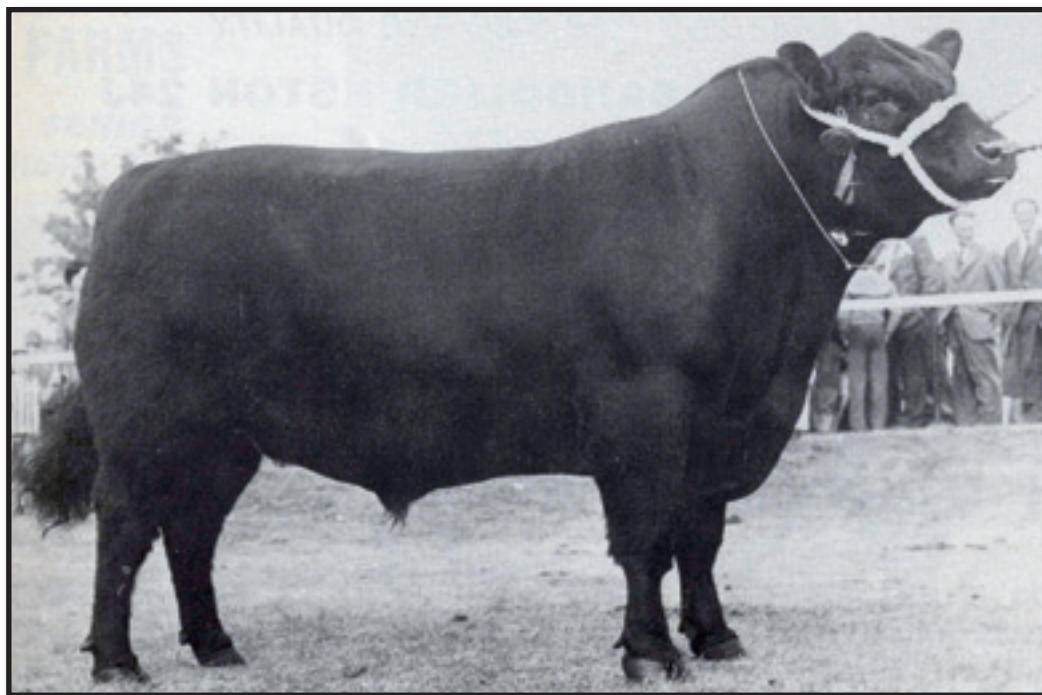
**DUNLOUSE PRIMROSE R574** - This sale feature from the Dunlouse foundation Pride female Eversfield Pumpkin F378 sells as Lot 13.



**DUNLOUSE KAILEY K360** - This granddaughter of Dunlouse Kate D107 is the dam of twin daughters who sell as Lots 15 and 16.



# Dunlouse Foundation AI Sires



**EVESUND OF DUPLIN** - Reference Sire L

This cornerstone sire in the Dunlouse breeding program is widely regarded as one of the top breeding bulls of his generation.

Evesund of Dupplin twice reigned as the prestigious Supreme Champion at the Royal Highland Agricultural Society Show when he won those honors in 1978 and 1979, and was admired as a model of modern Angus breeding while carrying a 100% native origin pedigree. His paternal grandsire, Rambler of Newcroft, was a great breeding bull considered by many to be generations ahead of his time.

His dam carried forward the prolific Evergreen branch of the Erica family. His many prominent progeny in the Dunlouse program include the Genex proven sire Dunlouse Excalibur Y070 and his full siblings Dunlouse Evesund Y069 and Dunlouse Eve, as well as Dunlouse Engineer K358, Dunlouse Emma B070, Dunlouse Cherry Blossom K363, Dunlouse Kailey K360, Dunlouse Nell G253, Dunlouse Nobleman P552 and many others including the young cow who sells as Lot 9.

Evesund of Dupplin is a known red gene carrier.

**L**

## Evesund of Dupplin

Birth Date: 19 October, 1975	Bull FLD.Y18.01	Y1801
Rambler of Newcroft	Endeavour of Hungerford	
Eblis of Classlochie	Ruby of Loanhead	
#201386(AA)	Berger of Classlochie	
	Eurevine 2nd of Rowley	
Islabank Juringo Eric	Newhouse Eblardo	
Evergreen 3rd of Dupplin	Juno Erica of Islabank	
#216579(AA)	Ediction of Charterhouse	
	Evergreen 3rd of Woodhill	

FOR REFERENCE ONLY.

**M**

## Betro of Classlochie

Birth Date: 1 April, 1978	Bull MLU.A46.03	A4603
Jian Rufus	Grandee of Cavan	
Rockie of Woodview	Rosanna of Necarne	
#SUW.X4.00	Lord Minstrel of Ballyneanor	
	Rosier of Aughnagill	
Rambler of Newcroft	Endeavour of Hungerford	
Bethrothed 19th of Classlochie	Ruby of Loanhead	
#MLU.Y7.01	Just Eric of Eastfield	
	Betrothed of Balmyle	

FOR REFERENCE ONLY.



**BETRO OF CLASSLOCHIE** - Reference Sire M

This cornerstone sire in the Dunlouse breeding program is pictured as the Reserve Supreme Champion of the October 1979 Perth Sale where he sold for 16,500 guineas and recorded the second highest 400-day weight on performance test.

Upon study of available native origin sires during the building of the Dunlouse program, Betro of Classlochie rose to the top as the leading sire for daughter production data.

The influence of Betro of Classlochie in the Dunlouse program cannot be overemphasized as an integral component in many of the very best produced by Geordie and Julia Soutar, including the Genex proven sire Dunlouse Jipsey Earl E161 who is both sired by Betro of Classlochie and stems from a maternal grandam, Cannahars Jipsey Yoko Y485, who is one of his all-time greatest daughters.

Other leading daughters include the famous full sisters Dunlouse Elmarie Y071, Dunlouse Elissa A022, Dunlouse Ejeta C105 and Dunlouse Ellen E149.



# Dunlouse Foundation AI Sires

**N**

## *Piledrive of Haymount*

Birth Date: 6 June, 1970

Bull 200539(AA)

Ernest of Buchaam #183377(AA)	Padora's Prince of Hungerford Eerie of Derculich	Jewvil Eric of Manorhill Newhouse Padora Justin Eric of Derculich Eyra 4th of Derculich
Palleva of Haymount #203448(AA)	Eudort of Candacraig Paleena of Haymount	Jansen Eric of Darnside Eudora of Candacraig Banner of Belladrum Paletta of Haymount

### FOR REFERENCE ONLY.

Piledrive of Haymount is a time-tested sire first utilized in the Dunlouse breeding program more than 45 years after his birth, to provide another genetic avenue of native origin breeding.

Bred in the Arnott family's legendary Haymount Angus herd, Piledrive of Haymount features a sterling pedigree that combines the Pride and Erica families.

**O**

## *Prospect of Kilberry*

Birth Date: 7 December, 1968

Bull 198211(AA)

Recorder of Ballyneanor #190754(AA)	Newhouse Edwin Elvan Rosana 2nd of Ballyneanor	Eclipse of Belladrum Newhouse Edwina Elsa Stype Paramount 3rd Rosita of Hanstead
Principal Girl of Kilberry #211614(AA)	Emir of Haymount Principal Girl of Mullaghmast	Paulus of Leckaway Esterica of Haymount Enoch of Ballymacan Prinita of Milford 8th

### FOR REFERENCE ONLY.

A new dimension in the Dunlouse breeding program where he was first used nearly half of a century after his birth, backed by some of the best in old line breeding.

Prospect of Kilberry is a grandson of sires produced in the famous Newhouse and Haymount herds, and is backed by the Pride family.

**P**

## *Drumalee Recorder*

Birth Date: 4 January, 1971

Bull 832(IR)02

Black Beckett of Kilberry #196418(AA)	Recorder of Ballyneanor Black Beauty of Kilberry	Newhouse Edwin Elvan Rosanna 2nd of Ballyneanor Emir of Haymount Black Beauty of Kintore
Decca 3rd of Drumcole #191073(AA)	Fair Jack of Newmarket Deraha 2nd of Drumcole	Markree Embo June of Saunders Prince of Killala Deraha of Drumcole

### FOR REFERENCE ONLY.

This decades-old AI sire introduces still another new genetic avenue of 100% native origin genetics for the Dunlouse breeding program.

Bred in Ireland, this bull is by Black Beckett of Kilberry who combines Newhouse and Haymount breeding and is a three-quarter brother to Recorder of Ballyneanor, the sire of Reference Sire O, Prospect of Kilberry.

**Q**

## *Jubilant 2nd of Bohey*

Birth Date: 1 April, 1964

Bull 186591(AA)

Larchgrove Valiant #180277(AA)	Proprietor of Binion Larchgrove Vesta 3rd	Exact of Greenend Pansy Bud of Binion Prince of Beltrim Larchgrove Venick 3rd
Jenny of Bohey #189057(AA)	Jacob of Corromahon Judy of Garradice	Black Tarquin of Castleview Jet 5th of Corromahon Waiter of Milford Jet Princess of Garadice

### FOR REFERENCE ONLY.

Born more than half of a century ago, this rare genetic find was once marketed through the National Cattle Breeding Centre AI Stud.

Jubilant 2nd of Bohey offers a native origin pedigree that is virtually unrelated to the majority of the Dunlouse herd and was first introduced into the Soutar family's breeding program to produce progeny in the 2016 Dunlouse calf crop.



Welcome to Kingston Farm, home of Dunlouse Aberdeen-Angus.

**R**

## *Generic of Cavan*

Birth Date: 29 October, 1963

Bull 185935(AA)

Julian Eric of Cavan #176526(AA)	Eupator of Belladrum Jenenina Erica of Lacken	Paragon of Haymount Elfin Maid of Belladrum Prince of Melody Jumony Erica of Kinermony
Gentle of Lacken #168406(AA)	Eserdon of Kinermony Girley of Lacken	Pinocchio of Gaidrew Easy Erica of Buttermere Exromer of Douneside Grace of Mourne View

### FOR REFERENCE ONLY.

One of the earliest AI sires in UK history, this grand old sire features a pedigree that brings forward the names of several of the most highly respected herds in Aberdeen-Angus history, namely Cavan, Belladrum, Haymount, Kinermony, Gaidrew and Douneside.

Generic of Cavan is from the immortal sire lineage that traces to the legendary Paragon of Haymount.

Generic of Cavan has been introduced into the Dunlouse breeding program, along with his son Rupert of Lislimnaghan, more than half of a century after their births.

**S**

## *Rupert of Lislimnaghan*

Birth Date: 5 December, 1966

Bull 194508(AA)

Generic of Cavan #185935(AA)	Julian Eric of Cavan Gentle of Lacken	Eupator of Belladrum Jenenina Erica of Lacken Eserdon of Kinermony Girley of Lacken
Roselean of Aghnagill #202736(AA)	Kirkton Romulus Ruthana of Aghnagill	Enric of Leader Romance 2nd of Kirkton Joey Eric of West Drums Ruthana of Woodpark

### FOR REFERENCE ONLY.

Born more than half of a century ago, this time-tested bull and his sire, Generic of Cavan, have both been utilized for the first time in the Dunlouse breeding program more than half of a century after their births.

The potential of this father/son duo is limited only by the imagination.



The Beautiful Scotch Landscape as seen from Kingston Farm.



# ● **Dunlouse 100% Native Origin Aberdeen-Angus Females** ●



**DUNLOUSE EILEAN P540** - Lot 1

A powerful blending of the Erica, Jipsey and Cherry Blossom families. This special feature is by the Genex proven sire Dunlouse Jipsey Earl E161 from the proven matron Dunlouse Elfie J322 who is a maternal sister to the Genex sire Dunlouse Shot of Scotch by the Genex sire Dunlouse Commander Bond F176, stemming from the famous Dunlouse Elara A046. A full brother, Dunlouse Enigma R578, serves as a current Dunlouse herd sire.



**DUNLOUSE ELARA A046** - The grandam of Lot 1.

1

## **Dunlouse Eilean P540**

Birth Date: 7 March, 2014 Cow UK540196 400540 P540

Betro of Classlochie	Rockie of Woodview
Dunlouse Jipsey Earl E161	Bethrothed 19th of Classlochie
#UK540196 300161	Dunlouse Jipsey Clova C095
Dunlouse Commander Bond F176	Bernardo of Classlochie
Dunlouse Elfie J322	Cannahars Jipsey Yoko Y485
#UK540196 300322	Wedderlie Evictor
Dunlouse Elara A046	Champagne Cherry Bee B117
	Evidence of Westmains
	Dunlouse Elmarie Y071

Bred to calve 4 November, 2017 to GENERIC OF CAVAN. Examined safe.

2

## **Dunlouse Elizabeth N527**

Birth Date: 16 June, 2013 Cow UK540196 500527 N527

Dunlouse Jipsey Earl E161	Betro of Classlochie
Dunlouse Nevis L441	Dunlouse Jipsey Clova C095
#UK540196 300441	Ashley Jewlasto Eric
Budgehill Nena Y588	Budgehill Nena
Betro of Classlochie	Rockie of Woodview
Dunlouse Emerald F205	Bethrothed 19th of Classlochie
#UK540196 500205	Dunlouse Kinsman
Dunlouse Erica D121	Dunlouse Elissa A022

Bred to calve 2 September, 2017 to PILEDRIVE OF HAYMOUNT. Examined safe.



**DUNLOUSE ELIZABETH N527** - Lot 2

An impressive sale feature from the heart of the Dunlouse herd. This female is backed by a long line of successful cows from the Erica family in the Dunlouse program and is sired by Dunlouse Nevis L441, a leading son of Dunlouse Jipsey Earl E161. This female traces four times to Betro of Classlochie.



**DUNLOUSE ELISSA A022** - The third dam of Lot 2.



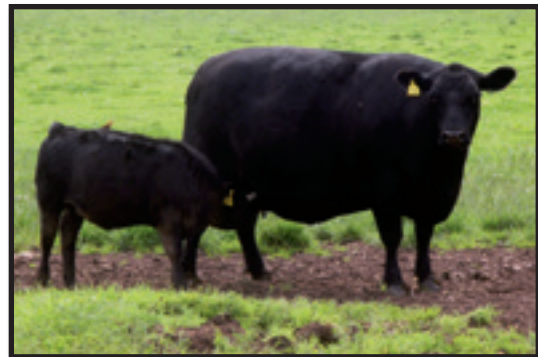
# ● **Dunlouse 100% Native Origin Aberdeen-Angus Females** ●



**DUNLOUSE PIPPA P544** - Lot 3



**DUNLOUSE CHERRY BLOSSOM DIANA D119** -  
The grandam of Lot 4.



**EVERSFIELD PUMPKIN F378** - The dam of Lot 3.



**DUNLOUSE CHERRY BLOSSOM N510** - Lot 4 with Lot 4A.

**3**

## **Dunlouse Pippa P544**

Birth Date: 22 March, 2014 Cow UK540196 100544 P544

Black Jasimo of Tebworth	Paramambo of Tebworth
Perlando of Tebworth	Black Janessa of Amphill
#181968(AA)	Mungos Patric
Perlita of Tebworth	Priscilla of Kirklington
	Cavetown Jet
Enoch of Holm Eden	Eva of Holm Eden
#UK369690 300378	Bernardo of Classlochie
Eversfield Princess C115	Budgehill Pristine E W19

Unlimited future potential.

This powerful and impressive cow is a second generation Dunlouse Pride donor backed by a unique outcross pedigree by Perlendo of Tebworth from a Dunlouse foundation female by Enoch of Holm Eden.

A package of frozen embryos from this cow sells as Lot 52.

Bred to calve 21 September, 2017 to PILEDRIVE OF HAYMOUNT.

Examined safe.



**4**

## **Dunlouse Cherry Blossom N510**

Birth Date: 21 February, 2013 Cow UK540196 200510 N510

Ty-Isha Egoson	Ty-Isha Ego 2nd	Ernesto of Hedgerley Park
#199032(AA)	Ty-Isha Elsa	Elfisa of Glen USK
		Ernest of Glen USK
		Elfisa of Glen USK
Dunlouse Cup Bearer H283		Dunlouse Jipsey Earl E161
Dunlouse Cherry Blossom K388		Champagne Cherry Bee B117
#UK540196 600388	Dunlouse Cherry Blossom Diana D119	Betro of Classlochie
		Champagne Cherry Bee A046

This Cherry Blossom cow by the native outcross sire Ty-Isha Egoson was produced from a dam by the Genex proven sire Dunlouse Cup Bearer H283.

The dam is a maternal sister to the Sinclair and Allen Creek sire Dunlouse Cattle Baron.

**4A**

## **Dunlouse Celtic Bloodline T643**

Birth Date: 21 January, 2017 Cow UK540196 200643 T643

Dunlouse Jipsey Earl E161	Betro of Classlochie
Dunlouse Enigma R578	Dunlouse Jipsey Clova C095
#UK540196 700578	Dunlouse Commander Bond F176
Dunlouse Elfie J322	Dunlouse Elara A046
Ty-Isha Egoson	Ty-Isha Ego 2nd
Dunlouse Cherry Blossom N510	Ty-Isha Elsa
#UK540196 200510	Dunlouse Cup Bearer H283
Dunlouse Cherry Blossom K388	Dunlouse Cherry Blossom Diana D119

This January herd sire prospect is backed by generations of some of the best in Dunlouse breeding, sired by a full brother to the featured Lot 1 female.



# ● **Dunlouse 100% Native Origin Aberdeen-Angus Females** ●



**DUNLOUSE JIPSEY NECTAR N532** - Lot 5 with Lot 5A.



**CANNAHARS JIPSEY YOKO Y485** - The maternal grandam of Lot 5.



**RUBY 5TH OF NEWCROFT** - The maternal grandam of Lot 6.



**DUNLOUSE ROSE P546** - Lot 6 with Lot 6A.

**5**

## **Dunlouse Jipsey Nectar N532**

Birth Date: 30 September, 2013 Cow UK540196 300532 N532

Dunlouse Jipsey Earl E161	Betro of Classlochrie
Dunlouse Nevis L441	Dunlouse Jipsey Clova C095
#UK540196 300441	Ashley Jewlasto Eric
Budgehill Nena Y588	Budgehill Nena
Emperor of Newark	Reunion of South Craig
Dunlouse Jipsey Hope H281	Erona of Newark
#UK540196 400281	Betro of Classlochrie
Cannahars Jipsey Yoko Y485	Jipsey Nova of Cannahars

Linebred to the Jipsey family, this great young cow is a maternal sister to Dunlouse Jipsey Monarch M491 produced from Dunlouse Jipsey Hope H281, a flush sister to Dunlouse Jipsey Halle H296, stemming from the Dunlouse foundation female Cannahars Jipsey Yoko Y485. An outstanding daughter is featured as Lot 22.

**5A**

## **Dunlouse Jipsey Tartan T642**

Birth Date: 13 January, 2017 Bull UK540196 100642 T642

Ernest of Buchaam	Padora's Prince of Hungerford
Piledrive of Haymount	Eerie of Derculich
#200539(AA)	Eudort of Candacraig
Palleva of Haymount	Paleena of Haymount
Dunlouse Nevis L441	Dunlouse Jipsey Earl E161
Dunlouse Jipsey Nectar N532	Budgehill Nena Y588
#UK540196 300532	Emperor of Newark
Dunlouse Jipsey Hope H281	Cannahars Jipsey Yoko Y485

An exciting opportunity to acquire a son of the decades-old Piledrive of Haymount, produced from a linebred Jipsey dam by Dunlouse Nevis L441.

**6**

## **Dunlouse Rose P546 (ET)**

Birth Date: 27 March, 2014 Cow UK540196 300546 P546

Reunion of South Craig	Rockie of Woodview
Emperor of Newark	Woodview Rosemary
#WXM.C21.05	Planet of Wandel
Erona of Newark	Eritana of Newark
Dunlouse Jipsey Earl E161	Betro of Classlochrie
Dunlouse Ruby J346	Dunlouse Jipsey Clova C095
#UK540196 600346	Wedderlie Evictor
Ruby 5th of Newcroft	Ruby 4th of Newcroft

A young daughter of Emperor of Newark, one of the most successful foundation AI sires utilized in the Dunlouse breeding program. The dam is a full sister to Dunlouse Ruby H278 from the mating of Dunlouse Jipsey Earl E161 with the Dunlouse foundation female Ruby 5th of Newcroft.

**6A**

## **Dunlouse Rebel T646**

Birth Date: 9 March, 2017 Bull UK540196 500646 T646

Dunlouse Jipsey Earl E161	Betro of Classlochrie
Dunlouse Enigma R578	Dunlouse Jipsey Clova C095
#UK540196 700578	Dunlouse Commander Bond F176
Dunlouse Elfie J322	Dunlouse Elara A046
Emperor of Newark	Reunion of South Craig
Dunlouse Rose P546	Erona of Newark
#UK540196 300546	Dunlouse Jipsey Earl E161
Dunlouse Ruby J346	Ruby 5th of Newcroft

A linebred descendant of the Genex proven sire Dunlouse Jipsey Earl E161, sired by a full brother to the featured Lot 1 female and produced from a dam by Emperor of Newark.



# ● **Dunlouse 100% Native Origin Aberdeen-Angus Females** ●



**DUNLOUISE RACHEL P549** - Lot 7 with Lot 7A.



**DUNLOUISE RUTH H278** - The dam of Lot 7.



**DUNLOUISE JIPSEY HALLE H296** - The dam of Lot 8.



**DUNLOUISE JIPSEY PRINCESS P550** - Lot 8 with Lot 8A.

**7**

## **Dunlouse Rachel P549**

Birth Date: 5 April, 2014 Cow UK540196 600549 P549

Parsee of Doonholm #199389(AA)	Primo of Hoprig Parthenia of Doonholm	Edwin Elvis of Thornton Paula of Hoprig Bahram of Broadleys Portia of Doonholm Betro of Classlochrie Dunlouse Jipsey Clova C095 Wedderlie Evictor Ruby 4th of Newcroft
Dunlouse Ruth H278 #UK540196 100278	Dunlouse Jipsey Earl E161 Ruby 5th of Newcroft	

A daughter of the native outcross sire Parsee of Doonholm, stemming from Ruby 5th of Newcroft.  
This cow is a full sister to Reference Sire H, Dunlouse Raider N504.  
The dam of this cow is a full sister to the dam of Lot 6.

**8**

## **Dunlouse Jipsey Princess P550**

Birth Date: 13 April, 2014 Cow UK540196 700550 P550

Dunlouse Patriot M456 #UK540196 400456	Dunlouse Cup Bearer H283 Eversfield Pumpkin F378	Dunlouse Jipsey Earl E161 Champagne Cherry Bee B117 Enoch of Holm Eden Eversfield Princess C115 Reunion of South Craig Erona of Newark Betro of Classlochrie Jipsey Nova of Cannahars
Dunlouse Jipsey Halle H296 #UK540196 500296	Emperor of Newark Cannahars Jipsey Yoko Y485	

A special sale feature from the Jipsey family and sired by a grandson of Dunlouse Jipsey Earl E161.  
The impressive dam of this cow is one of the greatest daughters of the Dunlouse foundation female Cannahars Jipsey Yoko Y485.

**7A**

## **Dunlouse Reba S635**

Birth Date: 1 November, 2016 Cow UK540196 100635 S635

Dunlouse Jipsey Earl E161 #UK540196 300161	Betro of Classlochrie Dunlouse Jipsey Clova C095	Rockie of Woodview Bethrothed 19th of Classlochrie Bernardo of Classlochrie Cannahars Jipsey Yoko Y485 Primo of Hoprig Parthenia of Doonholm Dunlouse Jipsey Earl E161 Ruby 5th of Newcroft
Dunlouse Rachel P549 #UK540196 600549	Parsee of Doonholm Dunlouse Ruth H278	

This valuable Ruby heifer is a linebred descendant of the Genex proven sire Dunlouse Jipsey Earl E161.

**8A**

## **Dunlouse Jipsey Snowdrop S637**

Birth Date: 25 November, 2016 Cow UK540196 300637 S637

Rupert of Lislimnaghan #194508(AA)	Generic of Cavan Roselean of Aghnagill	Julian Eric of Cavan Gentle of Lacken Kirkton Romulus Ruthana of Aghnagill Dunlouse Cup Bearer H283 Eversfield Pumpkin F378 Emperor of Newark Cannahars Jipsey Yoko Y485
Dunlouse Jipsey Princess P550 #UK540196 700550	Dunlouse Patriot M456 Dunlouse Jipsey Halle H296	

A first glimpse of the breeding potential of Rupert of Lislimnaghan in the Dunlouse program.  
This heifer stems from the highly regarded mother/daughter duo Cannahars Jipsey Yoko Y485 and Dunlouse Jipsey Halle H296.



# ● **Dunlouse 100% Native Origin Aberdeen-Angus Females** ●



**DUNLOUISE JIPSEY PEACH P559** - Lot 9 with Lot 9A.



**DUNLOUISE JIPSEY CLOVA C095** - Maternal sister to the dam of Lot 9.



**DUNLOUISE EULIMA HANNA H256** - The dam of Lot 10.



**DUNLOUISE EULIMA PENNY P565** - Lot 10 with Lot 10A.

**9**

## **Dunlouse Jipsey Peach P559 (ET)**

Birth Date: 28 May, 2014 Cow UK540196 200559 P559

Eblis of Classlochrie	Rambler of Newcroft
Evesund of Dupplin	Ebony Esso of Rowley
#FLD.Y18.01	Islabank Juringo Eric
Evergreen 3rd of Dupplin	Evergreen of Dupplin
Dunlouse Cortachy Boy D137	Ashley Euler
Dunlouse Jipsey Girl G233	Champagne Cherry Bee B117
#UK540196 500233	Betro of Classlochrie
Cannahars Jipsey Yoko Y485	Jipsey Nova of Cannahars

A rare opportunity to acquire a daughter of the twice Royal Highland Supreme Champion Evesund of Dupplin. This young cow from the Jipsey family was produced from a dam who is the result of mating the Genex proven sire Dunlouse Cortachy Boy D137 with a maternal sister to the dam of the Genex proven sire Dunlouse Jipsey Earl E161.

**9A**

## **Dunlouse Jipsey Thunder S649**

Birth Date: 1 April, 2017 Bull UK540196 100649 S649

Dunlouse Jipsey Earl E161	Betro of Classlochrie
Dunlouse Enigma R578	Dunlouse Jipsey Clova C095
#UK540196 700578	Dunlouse Commander Bond F176
Dunlouse Elfie J322	Dunlouse Elara A046
Evesund of Dupplin	Eblis of Classlochrie
Dunlouse Jipsey Peach P559 (ET)	Evergreen 3rd of Dupplin
#UK540196 200559	Dunlouse Cortachy Boy D137
Dunlouse Jipsey Girl G233	Cannahars Jipsey Yoko Y485

A promising April herd sire prospect by a full brother to the featured Lot 1 female, with a pedigree that traces multiple times to both the Jipsey and Cherry Blossom families.

**10**

## **Dunlouse Eulima Penny P565**

Birth Date: 12 October, 2014 Cow UK540196 100565 P565

Dunlouse Engineer K358	Evesund of Dupplin
Dunlouse Jipsey Monarch M491	Dunlouse Emerald F205
#UK540196 400491	Emperor of Newark
Dunlouse Jipsey Hope H281	Cannahars Jipsey Yoko Y485
Wicken of Haymount	Banner of Belladrum
Dunlouse Eulima Hanna H256	Wanda of Haymount
#UK540196 700256	Betro of Classlochrie
Dunlouse Elluma Elsa E172	Dunlouse Eulima Chloe C097

A promising young cow by Dunlouse Jipsey Monarch M491 from Dunlouse Eulima Hanna H256 who is linebred to Wicken of Haymount, stemming from Dunlouse Eulima Chloe C097.

**10A**

## **Dunlouse Eulima Snowflake S639**

Birth Date: 29 December, 2016 Cow UK540196 500639 S639

Ernest of Buchaam	Padora's Prince of Hungerford
Piledrive of Haymount	Eerie of Derculich
#200539(AA)	Eudort of Candacraig
Pallea of Haymount	Paleena of Haymount
Dunlouse Jipsey Monarch M491	Dunlouse Engineer K358
Dunlouse Eulima Penny P565	Dunlouse Jipsey Hope H281
#UK540196 100565	Wicken of Haymount
Dunlouse Eulima Hanna H256	Dunlouse Elluma Elsa E172

A true genetic gem sired by the decades-old Piledrive of Haymount, backed by a cow family of the highest quality.



# ● Dunlouse 100% Native Origin Aberdeen-Angus Females ●



**DUNLOUSE CHERRY BLOSSOM P566** - Lot 11

## 11 **Dunlouse Cherry Blossom P566**

Birth Date: 30 November, 2014 Cow UK540196 200566 P566

Betro of Classlochie	Rockie of Woodview
Dunlouse Jipse Earl E161	Bethrothed 19th of Classlochie
#UK540196 300161	Bernardo of Classlochie
Dunlouse Jipse Clova C095	Cannahars Jipse Yoko Y485
Betro of Classlochie	Rockie of Woodview
Dunlouse Cherry Blossomessie E170	Bethrothed 19th of Classlochie
#UK540196 500170	Ashley Elmighy
Champagne Cherry Bee A046	Cherry Bee W9 of Champagne

This linebred double granddaughter of Betro of Classlochie sired by Dunlouse Jipse Earl E161 was produced from a dam who is a full sister to the dam of Dunlouse Cattle Baron.

Bred to calve 2 September, 2017 to JUBLINANT 2ND OF BOHEY. Examined safe.



**DUNLOUSE PRIMROSE R574** - Lot 13

## 13 **Dunlouse Primrose R574**

Birth Date: 26 February, 2015 Cow UK540196 300574 R574

Parsee of Doonholm	Primo of Hoprig
Dunlouse Raider N504	Parthenia of Doonholm
#UK540196 300504	Dunlouse Jipse Earl E161
Dunlouse Ruth H278	Ruby 5th of Newcroft
Enoch of Holm Eden	Cavetown Jet
Eversfield Pumpkin F378	Eva of Holm Eden
#UK369690 300378	Bernardo of Classlochie
Eversfield Princess C115	Budgehill Pristine E W19

A powerful and promising young female from the Pride family, produced from the Dunlouse foundation female Eversfield Pumkin F378 and sired by Dunlouse Raider N504.

A maternal sister who has served as a second generation Dunlouse donor is featured as Lot 3.

Bred to calve 21 August, 2017 to JUBILANT 2ND OF BOHEY. Examined safe.

## 12 **Dunlouse Jipse Rose R568**

Birth Date: 14 February, 2015 Cow UK540196 400568 R568

Parsee of Doonholm	Primo of Hoprig
Dunlouse Raider N504	Parthenia of Doonholm
#UK540196 300504	Dunlouse Jipse Earl E161
Dunlouse Ruth H278	Ruby 5th of Newcroft
Emperor of Newark	Reunion of South Craig
Dunlouse Jipse Hope H281	Erona of Newark
#UK540196 400281	Betro of Classlochie
Cannahars Jipse Yoko Y485	Jipse Nova of Cannahars

This daughter of Dunlouse Raider N504 is a maternal sister to both Lot 5 and to the Dunlouse herd sire Dunlouse Jipse Monarch M491.

Bred to calve 2 September, 2017 to DRUMALEE RECORDER. Examined safe.

## 14 **Dunlouse Erinora R575**

Birth Date: 3 March, 2015 Cow UK540196 400575 R575

Betro of Classlochie	Rockie of Woodview
Dunlouse Jipse Earl E161	Bethrothed 19th of Classlochie
#UK540196 300161	Bernardo of Classlochie
Dunlouse Jipse Clova C095	Cannahars Jipse Yoko Y485
Prince Ernest of Wedderlie	Newhouse Excellence
Dunlouse Erin J350	Princess Erna of Wedderlie
#UK540196 300350	Betro of Classlochie
Dunlouse Ellen E149	Ejeta of Templehouse

An opportunity to acquire a royally-bred daughter of the proven multi-trait sire Dunlouse Jipse Earl E161.

The grandam is a member of the most famous collection of full sisters in Dunlouse history.

Bred to calve 24 November, 2017 to DUNLOUSE CORTACHY BOY D137. Examined safe.



**DUNLOUSE JIPSE ROSE R568** - Lot 12



**DUNLOUSE ERINORA R575** - Lot 14



# ● **Dunlouse 100% Native Origin Aberdeen-Angus Females** ●



**DUNLOUISE KINDNESS R576** - Lot 15

The first of two tremendous linebred descendants of Dunlouse Jipsey Earl E161, the Genex proven sire who excels in multi-trait superiority. The dam is by the twice Royal Highland Supreme Champion Evesund of Dupplin, from the family that produced Dunlouse Kinsman.



**DUNLOUISE KAILEY K360** - The dam of Lots 15 and 16.

15

## **Dunlouse Kindness R576**

Birth Date: 4 March, 2015	Cow UK540196 500576	R576
Betro of Classlochie		
Dunlouse Jipsey Earl E161	Rockie of Woodview	
#UK540196 300161	Betrothed 19th of Classlochie	
Dunlouse Jipsey Clova C095	Bernardo of Classlochie	
	Cannahars Jipsey Yoko Y485	
Evesund of Dupplin	Eblis of Classlochie	
Dunlouse Kailey K360	Evergreen 3rd of Dupplin	
#UK540196 600360	Dunlouse Jipsey Earl E161	
Dunlouse Kristy G246	Dunlouse Kate D107	

Bred to calve 26 October, 2017 to GENERIC OF CAVAN. Examined safe.

16

## **Dunlouse Kora R577**

Birth Date: 4 March, 2015	Cow UK540196 600577	R577
Betro of Classlochie		
Dunlouse Jipsey Earl E161	Rockie of Woodview	
#UK540196 300161	Betrothed 19th of Classlochie	
Dunlouse Jipsey Clova C095	Bernardo of Classlochie	
	Cannahars Jipsey Yoko Y485	
Evesund of Dupplin	Eblis of Classlochie	
Dunlouse Kailey K360	Evergreen 3rd of Dupplin	
#UK540196 600360	Dunlouse Jipsey Earl E161	
Dunlouse Kristy G246	Dunlouse Kate D107	

Exposed to DUNLOUISE CURVE BENDER S611 after 16 May, 2017.



**DUNLOUISE KORA R577** - Lot 16

An opportunity to select twin sisters by the Genex proven sire Dunlouse Jipsey Earl E161, stemming from a maternal grandam by the same iconic sire. The third dam is a granddaughter of Karen of Boghall, the very first foundation female selected by Geordie Soutar in 1995.



**DUNLOUISE KATE D107** - The third dam of Lots 15 and 16.



# ● **Dunlouse 100% Native Origin Aberdeen-Angus Females** ●



**DUNLOUISE CHERRY BLOSSOM R580** - Lot 17

**17**

## **Dunlouse Cherry Blossom R580**

Birth Date: 19 March, 2015 Cow UK540196 200580 R580

Parsee of Doonholm  
Dunlouse Raider N504  
#UK540196 300504 Dunlouse Ruth H278

Dunlouse Engineer K358  
Dunlouse Cherry Blossom M492  
#UK540196 500492 Dunlouse Cherry Blossom K363

Primo of Hoprig  
Parthenia of Doonholm  
Dunlouse Jipsey Earl E161  
Ruby 5th of Newcroft  
Evesund of Dupplin  
Dunlouse Emerald F205  
Evesund of Dupplin  
Dunlouse Cherry Blossom G252

A promising young female by Dunlouse Raider N504 from a linebred double granddaughter of Evesund of Dupplin, backed by generations of the Cherry Blossom family developed in the Dunlouse program. Bred to calve 2 September, 2017 to PROSPECT OF KILBERRY. Examined safe.



**DUNLOUISE JIPSEY RAINA R583** - Lot 19

**19**

## **Dunlouse Jipsey Raina R583**

Birth Date: 17 April, 2015 Cow UK540196 500583 R583

Dunlouse Engineer K358  
Dunlouse Jipsey Monarch M491  
#UK540196 400491 Dunlouse Jipsey Hope H281

Emperor of Newark  
Dunlouse Jipsey Halle H296  
#UK540196 500296 Cannahars Jipsey Yoko Y485

Evesund of Dupplin  
Dunlouse Emerald F205  
Emperor of Newark  
Cannahars Jipsey Yoko Y485  
Reunion of South Craig  
Erona of Newark  
Betro of Classlochie  
Jipsey Nova of Cannahars

This intriguing daughter of Dunlouse Jipsey Monarch M491 has the distinction of being linebred through the flush sisters Dunlouse Jipsey Halle H296 and Dunlouse Jipsey Hope H281. A maternal sister sells as Lot 8. Bred to calve 2 September, 2017 to DUNLOUISE CORTACHY BOY D137. Examined safe.

**18**

## **Dunlouse Essence R581**

Birth Date: 26 March, 2015 Cow UK540196 300581 R581

Dunlouse Engineer K358  
Dunlouse Jipsey Monarch M491  
#UK540196 400491 Dunlouse Jipsey Hope H281

Proud Irvin of Westdrums  
Dunlouse Elsa F175  
#UK540196 300175 Dunlouse Elmarie Y071

Evesund of Dupplin  
Dunlouse Emerald F205  
Emperor of Newark  
Cannahars Jipsey Yoko Y485  
Genex of Cavan  
Proud Ithra of Westdrums  
Betro of Classlochie  
Ejeta of Templehouse

This daughter of Dunlouse Jipsey Monarch M491 was produced from a dam who is a maternal sister to the famous Dunlouse Elara A046. Bred 13 April, 2017 to DUNLOUISE CURVE BENDER S611.

**20**

## **Dunlouse Nicola R587**

Birth Date: 16 May, 2015 Cow UK540196 200587 R587

Edmont of Greenend  
Jaunax Eric of Church Farm  
#198083(AA) Japonica Erica of Eynsham

Parsee of Doonholm  
Dunlouse Nina N506  
#UK540196 500506 Dunlouse Nell K411

Welkin of Haymount  
Emborica of Fordhouse  
Pre-Eminence of Manorhill  
Justina Erica of Eynsham  
Primo of Hoprig  
Parthenia of Doonholm  
Dunlouse Commander Bond F176  
Budgehill Nena Y588

A very unique pedigree represented with this young female from the Nell family and sired by Jaunax Eric of Church Farm from a dam by Parsee of Doonholm. Bred to calve 2 September, 2017 to DUNLOUISE JIPSEY EARL E161. Examined safe.



**DUNLOUISE ESSENCE R581** - Lot 18



**DUNLOUISE NICOLA R587** - Lot 20



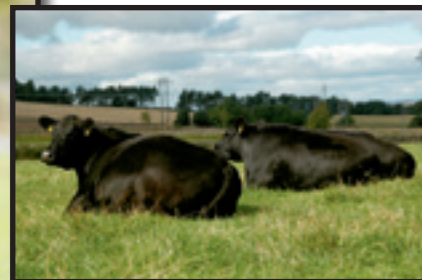
# • **Dunlouse 100% Native Origin Aberdeen-Angus Females** •



**DUNLOUISE ELLIE R589** - Lot 21

A true sale attraction. This exquisite beauty by Dunlouse Jipsey Monarch M491 is backed by generations of some of the finest females ever produced in the Dunlouse program from the Erica family.

The grandam of this female is a maternal sister to both Dunlouse Elara A046 and Dunlouse Emma B070.



**DUNLOUISE ELISSAA 022 & DUNLOUISE ELMARIE Y071** - Same family as Lot 21.

**21**

## **Dunlouse Ellie R589**

Birth Date: 29 May, 2015	Cow UK540196 400589	R589
Dunlouse Engineer K358	Evesund of Dupplin	
Dunlouse Jipsey Monarch M491	Dunlouse Emerald F205	
#UK540196 400491	Emperor of Newark	
Dunlouse Jipsey Hope H281	Cannahars Jipsey Yoko Y485	
Prince Ernest of Wedderlie	Newhouse Excellence	
Dunlouse Emmaline M454	Princess Erna of Wedderlie	
#UK540196 200454	Proud Irvin of Westdrums	
Dunlouse Elsa F175	Dunlouse Elmarie Y071	

Bred to calve 13 October, 2017 to GENERIC OF CAVAN. Examined safe.

**22**

## **Dunlouse Jipsey Rainbow R598**

Birth Date: 15 November, 2015	Cow UK540196 600598	R598
Ty-Isha Ego 2nd	Ernesto of Hedgerley Park	
Ty-Isha Elsa	Elfisa of Glen USK	
Dunlouse Nevis L441	Ernest of Glen USK	
Dunlouse Jipsey Nectar N532	Elfisa of Glen USK	
#UK540196 300532	Dunlouse Jipsey Earl E161	
Dunlouse Jipsey Hope H281	Budgehill Nena Y588	
	Emperor of Newark	
	Cannahars Jipsey Yoko Y485	

Exposed to DUNLOUISE CURVE BENDER S611 after 16 May, 2017.



**DUNLOUISE JIPSEY RAINBOW R598** - Lot 22

A powerful bred heifer with as much potential as any female ever offered from the Dunlouse program.

This daughter of the native outcross sire Ty-Isha Egoson was produced from a dam who is a maternal sister to Dunlouse Jipsey Monarch M491. Her dam sells as Lot 5.



**DUNLOUISE JIPSEY MONARCH M491** - The sire of Lot 21 and maternal brother to the dam of Lot 22.



# ● Dunlouse 100% Native Origin Aberdeen-Angus Females ●



**DUNLOUISE RED NELLIE R594** - Lot 23



**DUNLOUISE RED NATIVE F207** - From the same family as Lot 23 and maternal grandsire of Lots 24 and 25.



**DUNLOUISE RED NESSIE M494** - The dam of Lot 23.



**DUNLOUISE RED CLARET BELLA R596** - Lot 24

**23**

## **Dunlouse Red Nellie R594**

Birth Date: 29 June, 2015

Cow UK540196 200594

R594

Enoch of Holm Eden  
Dunlouse Emmisary N522  
#UK540196 700522 Dunlouse Emma B070

Dunlouse Engineer K358  
Dunlouse Red Nessie M494  
#UK540196 700494 Dunlouse Red Nell K383

Cavetown Jet (Imp)  
Eva of Holm Eden  
Evesund of Dupplin  
Dunlouse Elmarie Y071  
Evesund of Dupplin  
Dunlouse Emerald F205  
Dunlouse Cup Bearer H283  
Dunlouse Nell G253

A high quality Red Angus female from the same Nell cow family that produced the Genex sire Dunlouse Red Native F207.  
Bred to calve 6 November, 2017 to DUNLOUISE RED NATIVE F207. Examined safe.

**24**

## **Dunlouse Red Claret Bella R596 (ET)**

Birth Date: 23 August, 2015

Cow UK540196 400596

R596

Dunlouse Engineer K358  
Dunlouse Red Eddard M496  
#UK540196 200496 Dunlouse Red Emmy K377

Dunlouse Red Native F207  
Dunlouse Red Country Babe N521  
#UK540196 600521 Dunlouse Red Country Belle K361

Evesund of Dupplin  
Dunlouse Emerald F205  
Dunlouse Cup Bearer H283  
Dunlouse Emmy G245  
Prattle of Haymount  
Eversfield Red Nena D252  
Evesund of Dupplin  
Dunlouse Cherry Blossomerin E171

This Red Angus female from the Cherry Blossom family features a pedigree that blends several of the noted Dunlouse tribes into one tabulation.

Bred 19 May, 2017 to DUNLOUISE RED NATIVE F207.

**25**

## **Dunlouse Red Clova Berry R597 (ET)**

Birth Date: 25 August, 2015

Cow UK540196 500597

R597

Dunlouse Engineer K358  
Dunlouse Red Eddard M496  
#UK540196 200496 Dunlouse Red Emmy K377

Dunlouse Red Native F207  
Dunlouse Red Country Babe N521  
#UK540196 600521 Dunlouse Red Country Belle K361

Evesund of Dupplin  
Dunlouse Emerald F205  
Dunlouse Cup Bearer H283  
Dunlouse Emmy G245  
Prattle of Haymount  
Eversfield Red Nena D252  
Evesund of Dupplin  
Dunlouse Cherry Blossomerin E171

A flush sister to Lot 24 from the Cherry Blossom family and sired by a son of Dunlouse Engineer K358 from a dam by Dunlouse Red Native F207.  
Bred 3 May, 2017 to DUNLOUISE RED NATIVE F207.



**DUNLOUISE RED CLOVA BERRY R597** - Lot 25



# ● **Dunlouse 100% Native Origin Aberdeen-Angus Females** ●



**DUNLOUISE EMMY R599** - Lot 26



**DUNLOUISE ESME S607** - Lot 28

**26**

## **Dunlouse Emmy R599**

Birth Date: 1 December, 2015 Cow UK540196 700599 R599  
 Parsee of Doonholm  
 Dunlouse Raider N504  
 #UK540196 300504 Dunlouse Ruth H278  
 Dunlouse Jipsey Earl E161  
 Dunlouse Elouise H300  
 #UK540196 200300 Dunlouse Estelle F196  
 Primo of Hoprig  
 Parthenia of Doonholm  
 Dunlouse Jipsey Earl E161  
 Ruby 5th of Newcroft  
 Betro of Classlochie  
 Dunlouse Jipsey Clova C095  
 Enoch of Holm Eden  
 Dunlouse Eve

The lead-off female of the yearling open heifers.  
 This young heifer by Dunlouse Raider N504 is double-bred to Dunlouse Jipsey Earl E161 from the Erica family tracing to Dunlouse Eve, a full sister to Dunlouse Excalibur Y070 and Dunlouse Evesund Y069.

**28**

## **Dunlouse Esme S607**

Birth Date: 17 February, 2016 Cow UK540196 100607 S607  
 Recorder of Ballyneanor  
 Prospect of Kilberry  
 #198211(AA) Principal Girl of Kilberry  
 Evidence of Westmains  
 Dunlouse Edie F180  
 #UK540196 100180 Euryclea of the Moss  
 Newhouse Edwin Elvan  
 Rosana 2nd of Ballyneanor  
 Emir of Haymount  
 Principal Girl of Mullaghmast  
 Paradon of Fordhouse  
 Even Erica of Westmains  
 Betro of Classlochie  
 Euterpe 2nd of the Moss

This heifer by the Irish sire Prospect of Kilberry is from a different branch of the Erica family developed in the Dunlouse breeding program. The dam was produced in the embryo program from the Dunlouse foundation female Euryclea of the Moss.

**27**

## **Dunlouse Eulima Sarah S602**

Birth Date: 24 January, 2016 Cow UK540196 300602 S602  
 Generic of Cavan  
 Rupert of Lislimnaghan  
 #194508(AA) Roselean of Aughnagill  
 Ashley Eular  
 Dunlouse Eulima Marty M484  
 #UK540196 400484 Dunlouse Eulima Hanna H256  
 Julian Eric of Cavan  
 Gentle of Lacken  
 Kirkton Romulus  
 Ruthana of Aughnagill  
 Eroco of Bankhead  
 Ashley Eulona  
 Wicken of Haymount  
 Dunlouse Eulima Elsa E172

A special favorite from the Eulima branch of the Erica family.  
 This heifer stacks three generations of AI sires in three generations, that were utilized in the Dunlouse breeding program.

**29**

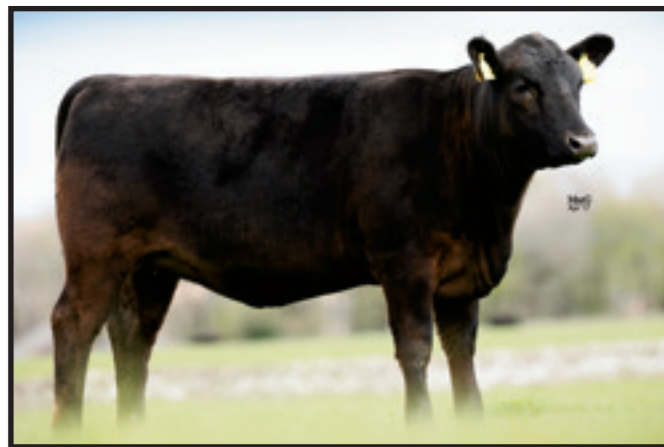
## **Dunlouse Enya S613**

Birth Date: 28 March, 2016 Cow UK540196 700613 S613  
 Julian Eric of Cavan  
 Generic of Cavan  
 #185935(AA) Gentle of Lacken  
 Prince Ernest of Wedderlie  
 Dunlouse Emmaline M454  
 #UK540196 200454 Dunlouse Elsa F175  
 Eupator of Belladrum  
 Jenenina Erica of Lacken  
 Eserdon of Kinermony  
 Girley of Lacken  
 Newhouse Excellence  
 Princess Erna of Wedderlie  
 Proud Irvin of Westdrums  
 Dunlouse Elmarie Y071

A first-time opportunity to select a direct daughter of the more than half of a century-old Generic of Cavan, from Dunlouse Angus herd.  
 This heifer is a maternal sister to the female featured as Lot 21.



**DUNLOUISE EULIMA SARAH S602** - Lot 27



**DUNLOUISE ENYA S613** - Lot 29



**● Dunlouisie 100% Native Origin Aberdeen-Angus Females ●**



**DUNLOUISE ROSEHIP S616 - Lot 30**

30

## Dunlouse Rosehip S616

Birth Date: 1 May, 2016      Cow UK540196 300616      S616

**Jubilant 2nd of Bohey**  
**#186591(AA)**

Dunlouse Jipsey Earl E161  
Dunlouse Ruth H278  
#UK540196 100278 Ruby 5th of Newcroft

Proprietor of Binion  
Larchgrove Vesta 3rd  
Jacob of Corramahon  
Judy of Garradice  
Betro of Classlochie  
Dunlouis Jipsey Clova C095  
Wedderlie Evictor  
Ruby 4th of Newcroft

**This young May heifer is a daughter of the highly regarded Dunlouse Ruth H278, stemming from the Dunlouse foundation female Ruby 5th of Newcroft.**

**This heifer is from the first calf crop at Dunlouis by a sire who was first introduced into the breeding program more than 50 years after his birth.**

31

***Dunlouse Eliza S617***

Birth Date: 5 May, 2016      Cow UK540196 400617      S617

Parsee of Doonholm  
Dunlouse Raider N504  
#UK540196 300504 Dunlouse Ruth H278

Dunlouis Nevis L441  
Dunlouis Elizabeth N527  
#UK540196 500527 Dunlouis Emerald F205

Primo of Hoprig  
Parthenia of Doonholm  
Dunlouis Jipsey Earl E161  
Ruby 5th of Newcroft  
Dunlouis Jipsey Earl E161  
Budgehill Nena Y588  
Betro of Classlochrie  
Dunlouis Erica D121

**A May heifer by Dunlouse Raider N504 from a dam by Dunlouse Nevis L441.**

**This heifer represents six generations of the Erica family in the Dunlouis herd.**

The dam of this heifer is featured as Lot 2.



**DUNLOUISE ELIZA S617 - Lot 31**



**DUNLOUISE EVA S619** - Lot 32

32

### *Dunlouse Eva S619*

Birth Date: 16 May. 2016	Cow UK540196 600619	\$619
--------------------------	---------------------	-------

**Recorder of Ballyneanor**  
**Prospect of Kilberry**  
**#198211(AA)** **Principal Girl of Kilberry**

**Proud Irvin of Westdrums**  
**Dunlouse Elsa F175**  
**#UK540196 300175 Dunlouse Elmarie Y071**

Newhouse Edwin Elvan  
Rosana 2nd of Ballyneanor  
Emir of Haymount  
Principal Girl of Mullaghmast  
Genex of Cavan  
Proud Ithora of Westdrums  
Betro of Classlochie  
Ejeta of Templehouse

**A member of the first calf crop at Dunlouis by Prospect of Kiberry who was first introduced into the Dunlouis breeding program nearly five decades after his birth.**

The dam is a maternal sister to Dunlouis Elara A046 and Dunlouis Emma B070.

33

## Dunlouse Elena S621

Birth Date: 19 May, 2016	Cow UK540196 100621	S621
--------------------------	---------------------	------

Generic of Cavan  
#185935(AA)

Dunlouse Jipsey Earl E161  
Dunlouse Eilean P540  
#UK540196 400540 Dunlouse Elfie J322

Eupator of Belladrum  
Jenenina Erica of Lacken  
Eserdon of Kinermony  
Girley of Lacken  
Betro of Classlochie  
Dunlouse Jipsey Clova C095  
Dunlouse Commander Bond F176  
Dunlouse Elara A046

**A descendant of Dunlouis Elara A046, sired by Generic of Cavan who was first introduced into the Dunlouis breeding program more than 50 years after his birth.**

This heifer is a paternal sister to the Dunlouse Al sire Rupert of Lislimnaghan.

**The dam of this heifer is featured as Lot 1.**



**DUNLOUISE ELENA S621** - Lot 33

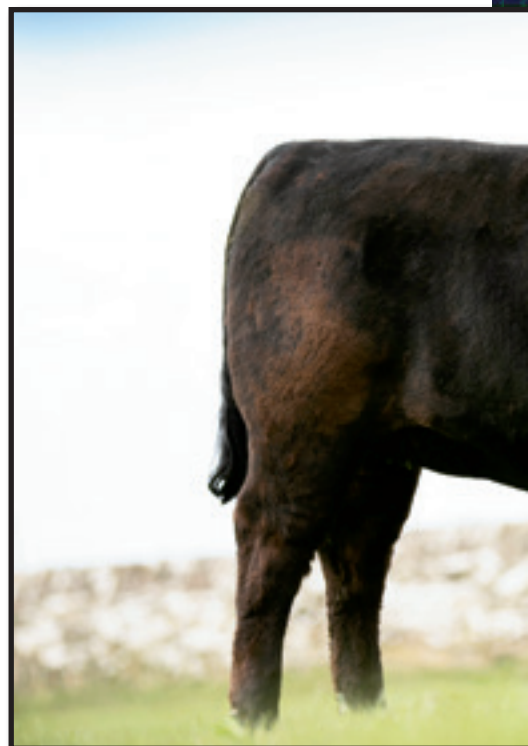


# ● **Dunlouse 100% Native Origin Aberdeen-Angus Females** ●



**DUNLOUSE EMILY S622** - Lot 34

This impressive June heifer is from the Jipsey family stemming from the highly regarded cows Dunlouse Jipsey Halle H296 and Cannahars Jipsey Yoko Y485. The dam is by the rare Dunlouse AI sire Prince Phryvol of Addington.



**DUNLOUSE JIPSEY STARDUST S626** - Lot 36

## **34** **Dunlouse Emily S622**

Birth Date: 21 May, 2016	Cow UK540196 200622	S622
Parsee of Doonholm	Primo of Hoprig	
Dunlouse Raider N504	Parthenia of Doonholm	
#UK540196 300504	Dunlouse Jipsey Earl E161	
	Ruby 5th of Newcroft	
Dunlouse Kinsman	Jumor Eric of Abernyte	
Dunlouse Erica D121	Karen of Boghall	
#UK540196 500121	Betro of Classlochrie	
Dunlouse Elissa A022	Ejeta of Templehouse	

A May yearling heifer from the Erica family stemming from the Dunlouse foundation female Ejeta of Templehouse. This heifer is sired by Dunlouse Raider N504 who has left an excellent set of daughters at Dunlouse.

## **35** **Dunlouse County Bloom S623**

Birth Date: 22 May, 2016	Cow UK540196 300623	S623
Larchgrove Valiant	Propitor of Binion	
Jubilant 2nd of Bohey	Larchgrove Vesta 3rd	
#186591(AA)	Jacob of Corromahon	
Jenny of Bohey	Judy of Garradice	
Dunlouse Cup Bearer H283	Dunlouse Jipsey Earl E161	
Dunlouse Cherry Blossom K388	Champagne Cherry Bee B117	
#UK540196 600388	Betro of Classlochrie	
Dunlouse Cherry Blossomdiana D119	Champagne Cherry Bee A046	

This May heifer is from the first calf crop at Dunlouse by Jubilant 2nd of Bohey who was first introduced into the Dunlouse breeding program more than half of a century after his birth. The dam of this heifer is linebred through the full sisters Champagne Cherry Bee A046 and Champagne Cherry Bee B117.



**DUNLOUSE COUNTY BLOOM S623** - Lot 35

## **36** **Dunlouse Jipsey Stardust S626**

Birth Date: 18 June, 2016	Cow UK540196 600626	S626
Evesund of Dupplin	Eblis of Classlochrie	
Dunlouse Nobleman P552	Evergreen 3rd of Dupplin	
#UK540196 200552	Dunlouse Commander Bond F176	
Dunlouse Nell K411	Budgehill Nena Y588	
Prince Phryvol of Addington	Propel of Haymount	
Dunlouse Jipsey Nymph N507	Phryndorovada of Addington	
#UK540196 600507	Emperor of Newark	
Dunlouse Jipsey Halle H296	Cannahars Jipsey Yoko Y485	



**DUNLOUSE CELTIC BELLE S627** - Lot 37



# ● **Dunlouse 100% Native Origin Aberdeen-Angus Females** ●



**37**

## **Dunlouse Celtic Belle S627**

Birth Date: 18 June, 2016

Cow UK540196 700627

S627

Evesund of Dupplin

Dunlouse Nobleman P552

#UK540196 200552 Dunlouse Nell K411

Dunlouse Engineer K358

Dunlouse Cherry Blossom M478

#UK540196 500478 Dunlouse Cherry Blossom G243

Eblis of Classlochie

Evergreen 3rd of Dupplin

Dunlouse Commander Bond F176

Budgehill Nena Y588

Evesund of Dupplin

Dunlouse Emerald F205

Dunlouse Jipsey Earl E161

Dunlouse Cherry Blossomdiva D111



Another exciting June heifer sired by Dunlouse Nobleman P552 who is a leading son of Evesund of Dupplin.

This Cherry Blossom female will undoubtedly be a sale favorite.



**DUNLOUISE NEVENA S630** - Lot 38

**38**

## **Dunlouse Nevena S630**

Birth Date: 22 July, 2016

Cow UK540196 300630

S630

Evesund of Dupplin

Dunlouse Nobleman P552

#UK540196 200552 Dunlouse Nell K411

Dunlouse Cortachy Boy D137

Dunlouse Nigella P541

#UK540196 500541 Budgehill Nena Y588

Eblis of Classlochie

Evergreen 3rd of Dupplin

Dunlouse Commander Bond F176

Budgehill Nena Y588

Ashley Eular

Champagne Cherry Bee B117

Ashley Jewlasto Eric

Budgehill Nena

A summer heifer calf from the Nell family tracing to the Dunlouse foundation female Budgehill Nena Y588.

This daughter of Dunlouse Nobleman P552 has a pedigree that combines the maternal brothers Dunlouse Cortachy Boy D137 and Dunlouse Commander Bond F175.

**39**

## **Dunlouse Ella S631**

Birth Date: 26 July, 2016

Cow UK540196 400631

S631

Evesund of Dupplin

Dunlouse Nobleman P552

#UK540196 200552 Dunlouse Nell K411

Emperor of Newark

Dunlouse Ejeta N508

#UK540196 700508 Dunlouse Eve

Eblis of Classlochie

Evergreen 3rd of Dupplin

Dunlouse Commander Bond F176

Budgehill Nena Y588

Reunion of South Craig

Erona of Newark

Evesund of Dupplin

Ejeta of Templehouse

The youngest single-lot female of the entire sale offering with the potential to be one of the very best.

This daughter of Dunlouse Nobleman P552 is double-bred to the Royal Highland Supreme Champion Evesund of Dupplin, and was produced from a dam by who is the result of mating Emperor of Newark with a full sister to Dunlouse Excalibur Y070.



**DUNLOUISE ELLA S631** - Lot 39



# Dunlouse 100% Native Origin Aberdeen-Angus Bulls



**DUNLOUSE CURVE BENDER S611** - Lot 40

This Dunlouse junior herd sire represents a new dimension of the herd sire producing Cherry Blossom family that produced the Genex sires Dunlouse Cortachy Boy D137, Dunlouse Commander Bond F176 and Dunlouse Cup Bearer H283.

This bull is from the first calf crop at Dunlouse by Piledrive of Haymount who was first introduced into the breeding program more than 45 years after his birth.



**DUNLOUSE CHERRY BLOSSOM K363** - The dam of Lot 40.

40

## Dunlouse Curve Bender S611

Birth Date: 23 March, 2016

Bull UK540196 500611

S611

Ernest of Buchaam  
Piledrive of Haymount  
#200539(AA) Palleva of Haymount

Evesund of Dupplin  
Dunlouse Cherry Blossom K363  
#UK540196 200363 Dunlouse Cherry Blossom G252

Padora's Prince of Hungerford  
Eerie of Derculich  
Eudort of Candacraig  
Paleena of Haymount  
Eblis of Classloch  
Evergreen 3rd of Dupplin  
Proud Irvin of Westdrums  
Dunlouse Cherry Blossomessie E170

FOR REFERENCE AND SALE.

41

## Dunlouse Newman S615

Birth Date: 26 April, 2016

Bull UK540196 200615

S615

Larchgrove Valiant  
Jubilant 2nd of Bohey  
#186591(AA) Jenny of Bohey

Parsee of Doonholm  
Dunlouse Nina N506  
#UK540196 500506 Dunlouse Nell K411

Proprietor of Binion  
Larchgrove Vesta 3rd  
Jacob of Corromahon  
Judy of Garradice  
Primo of Hoprig  
Parthenia of Doonholm  
Dunlouse Commander Bond F176  
Budgehill Nena Y588



**DUNLOUSE NEWMAN S615** - Lot 41

An attractive outcross prospect with unlimited herd sire potential from the first calf crop at Dunlouse by Jubilant 2nd of Bohey who was first introduced into the Dunlouse breeding program more than 50 years after his birth. The dam of this bull is by Parsee of Doonholm while the grandam is a daughter of Dunlouse Commander Bond F176 from the Dunlouse foundation female Budgehill Nena Y588.



**DUNLOUSE NELL K411** - The grandam of Lot 41.



# Dunlouisie 100% Native Origin Aberdeen-Angus Bulls

This May yearling herd sire prospect is from Dunlouisie Emma B070, one of the all-time greatest donors ever identified in the Dunlouisie breeding program. This special bull is from the first calf crop at Dunlouisie by Generic of Cavan who was first introduced into the breeding program more than half of a century after his birth.



**DUNLOUISE EMMA B070** - The dam of Lot 42.

**DUNLOUISE EINSTEIN S625** - Lot 42

42

## Dunlouisie Einstein S625

Birth Date: 26 May, 2016

Bull UK540196 500625

S625

Generic of Cavan

Julian Eric of Cavan

#185935(AA)

Gentle of Lacken

Evesund of Dupplin

Dunlouisie Emma B070

#UK540196 300070 Dunlouisie Elmarie Y071

Eupator of Belladrum

Jenenina Erica of Lacken

Eserdon of Kinermony

Girley of Lacken

Eblis of Classlochie

Evergreen 3rd of Dupplin

Betro of Classlochie

Ejeta of Templehouse

43

## Dunlouisie Earlston S629

Birth Date: 28 June, 2016

Bull UK540196 200629

S629

Parsee of Doonholm

Dunlouisie Raider N504

#UK540196 300504 Dunlouisie Ruth H278

Betro of Classlochie

Dunlouisie Emerald F205

#UK540196 500205 Dunlouisie Erica D121

Primo of Hoprig

Parthenia of Doonholm

Dunlouisie Jipsey Earl E161

Ruby 5th of Newcroft

Rockie of Woodview

Bethrothed 19th of Classlochie

Dunlouisie Kinsman

Dunlouisie Elissa A022

Dunlouisie Earlston S629 carries royal blood from the Erica family and sired by Dunlouisie Raider N504.

The dam is by the proven maternal trait sire Betro of Classlochie, stemming from Dunlouisie Erica D121, Dunlouisie Elissa A022 and Ejeta of Templehouse.



**DUNLOUISE ERICA D121** - The grandam of Lot 43.

**DUNLOUISE EARLSTON S629** - Lot 43



# ● **Dunlouse 100% Native Origin Aberdeen-Angus Embryos** ●



An elite blending of the Cherry Blossom and Jipsey families. These embryos are linebred to Betro of Classlochie, sired by the Genex proven sire Dunlouse Jipsey Earl E161 from Dunlouse Cherry Blossom Essie E170. The dam of these embryos is a full sister to the dam of Dunlouse Cattle Baron who won the admiration of cattlemen from around the world while on display at the 2009 World Angus Forum.



**DUNLOUSE COUNTY BEAUTY P542** - From the same family as Lot 44.

**44**

## **Dunlouse Cherry Blossom Embryos**

Five Frozen Embryos

Betro of Classlochie  
Dunlouse Jipsey Earl E161  
#UK540196 300161 Dunlouse Jipsey Clova C095

Betro of Classlochie  
Dunlouse Cherry Blossomessie E170  
#UK540196 500170 Champagne Cherry Bee A046

Rockie of Woodview  
Bethrothed 19th of Classlochie  
Bernardo of Classlochie  
Cannahars Jipsey Yoko Y485  
Rockie of Woodview  
Bethrothed 19th of Classlochie  
Ashley Elmighty  
Cherry Bee W9 of Champagne

**45**

## **Dunlouse Emma Embryos**

Six Frozen Embryos

Betro of Classlochie  
Dunlouse Jipsey Earl E161  
#UK540196 300161 Dunlouse Jipsey Clova C095

Evesund of Dupplin  
Dunlouse Emma B070  
#UK540196 300070 Dunlouse Elmarie Y071

Rockie of Woodview  
Bethrothed 19th of Classlochie  
Bernardo of Classlochie  
Cannahars Jipsey Yoko Y485  
Eblis of Classlochie  
Evergreen 3rd of Dupplin  
Betro of Classlochie  
Ejeta of Templehouse



The best in tried and true Dunlouse genetics. These embryos are by the Genex proven sire Dunlouse Jipsey Earl E161 from Dunlouse Emma B070, one of the all-time greatest females ever bred by Georgie Soutar and his family, stacking the highly proven and highly regarded sires Evesund of Dupplin and Betro of Classlochie.



**"Never underestimate the importance of the female line!"**  
--- Georgie

**DUNLOUSE EMMA B070** - The dam of Lot 45.



# ● **Dunlouse 100% Native Origin Aberdeen-Angus Embryos** ●

**46**

## ***Dunlouse Erica Embryos***

Two Frozen Embryos

Dunlouse Jipsey Earl E161  
Dunlouse Cup Bearer H283  
#UK540196 600283 Champagne Cherry Bee B117

Dunlouse Kinsman  
Dunlouse Erica D121  
#UK540196 500121 Dunlouse Elissa A022

Betro of Classlochie  
Dunlouse Jipsey Clova C095  
Ashley Elmighty  
Cherry Bee W9 of Champagne  
Jumor Eric of Abernyte  
Karen of Boghall  
Betro of Classlochie  
Ejeta of Templehouse

This package of embryos combine the Erica, Cherry Blossom, Jipsey and Kindness Pride families with a pedigree tracing multiple times to Betro of Classlochie.

The donor dam is one of the top cows ever sired by Dunlouse Kinsman and the grandam is one of the all-time best daughters of the foundation female Ejeta of Templehouse.



**DUNLOUSE ERICA D121** - *The dam of Lot 46.*

**47**

## ***Dunlouse Erin Embryos***

Five Frozen Embryos

Wedderlie Evictor  
Dunlouse Commander Bond F176  
#UK540196 400176 Champagne Cherry Bee B117

Prince Ernest of Wedderlie  
Dunlouse Erin J350  
#UK540196 300350 Dunlouse Ellen E149

Newhouse Edwin Elko  
Evista of Wedderlie  
Ashley Elmighty  
Cherry Bee W9 of Champagne  
Newhouse Excellence  
Princess Erna of Wedderlie  
Betro of Classlochie  
Ejeta of Templehouse

This package of frozen embryos combines the Erica and Cherry Blossom families, sired by the Genex proven sire Dunlouse Commander Bond F176.

The donor dam was produced from Dunlouse Ellen E149, a member of the most famous group of full sisters ever at Dunlouse.



**DUNLOUSE ERIN J350** - *The dam of Lot 47.*

**48**

## ***Dunlouse Eulima Embryos***

Four Frozen Embryos

Betro of Classlochie  
Dunlouse Jipsey Earl E161  
#UK540196 300161 Dunlouse Jipsey Clova C095

Ashley Eular  
Dunlouse Eulima Marty M484  
#UK540196 400484 Dunlouse Eulima Hanna H296

Rockie of Woodview  
Bethrothed 19th of Classlochie  
Bernardo of Classlochie  
Cannahs Jipsey Yoko Y485  
Eroco of Bankhead  
Ashley Eulona  
Wicken of Haymount  
Dunlouse Elluma Elsa E172

A rare opportunity to acquire embryos from the Eulima family tracing to the Wicken of Haymount daughters Dunlouse Eulima Hanna H296 and Dunlouse Eulima Chloe C097.

These embryos are by the Genex proven sire Dunlouse Jipsey Earl E161 from a dam who is a paternal sister to the Genex proven sire Dunlouse Cortachy Boy D137.



**DUNLOUSE EULIMA MARTY M484** - *The dam of Lot 48.*

**49**

## ***Dunlouse Jipsey Halle Embryos***

Four Frozen Embryos

Betro of Classlochie  
Dunlouse Jipsey Earl E161  
#UK540196 300161 Dunlouse Jipsey Clova C095

Emperor of Newark  
Dunlouse Jipsey Halle H296  
#UK540196 500296 Cannahs Jipsey Yoko Y485

Rockie of Woodview  
Bethrothed 19th of Classlochie  
Bernardo of Classlochie  
Cannahs Jipsey Yoko Y485  
Reunion of South Craig  
Erona of Newark  
Betro of Classlochie  
Jipsey Nova of Cannahs

A valuable package of frozen embryos by Dunlouse Jipsey Earl E161 tracing twice to Cannahs Jipsey Yoko Y485 and multiple times to Betro of Classlochie.

The impressive donor dam of these embryos is one of the most widely admired cows in the Dunlouse herd.

Maternal sisters are featured as Lots 8 and 19.



**DUNLOUSE JIPSEY HALLE H296** - *The dam of Lot 49.*



# ● **Dunlouse 100% Native Origin Aberdeen-Angus Embryos** ●



**DUNLOUSE NELL K411** - *The dam of Lot 50.*

**50**

## ***Dunlouse Nell Embryos***

Four Frozen Embryos

Ashley Eular	Eroco of Bankhead
Dunlouse Cortachy Boy D137	Ashley Eulona
#UK540196 700137	Ashley Elmighty
Champagne Cherry Bee B117	Cherry Bee W9 of Champagne
Dunlouse Commander Bond F176	Wedderlie Evictor
Dunlouse Nell K411	Champagne Cherry Bee B117
#UK540196 100411	Ashley Jewlasto Eric
Budgehill Nena Y588	Budgehill Nena

These Nell embryos are maternal siblings to the Dunlouse herd sire Dunlouse Nobleman P552 from a donor dam who was produced from the Dunlouse foundation female Budgehill Nena Y588. These embryos stack the influence of the maternal brothers Dunlouse Cortachy Boy D137 and Dunlouse Commander Bond F176.



**DUNLOUSE PIPPA P544** - *The dam of Lot 52.*

**51A**

## ***Dunlouse Nigella Embryos***

Five Frozen Embryos

**51B**

## ***Dunlouse Nigella Embryos***

Five Frozen Embryos

Betro of Classlochie	Rockie of Woodview
Dunlouse Jipsey Earl E161	Bethrothed 19th of Classlochie
#UK540196 300161	Bernardo of Classlochie
Dunlouse Jipsey Clova C095	Cannahars Jipsey Yoko Y485
Dunlouse Cortachy Boy D137	Ashley Eular
Dunlouse Nigella P541	Champagne Cherry Bee B117
#UK540196 500541	Ashley Jewlasto Eric
Budgehill Nena Y588	Budgehill Nena

Two packages of frozen embryos by the Genex proven sire Dunlouse Jipsey Earl E161 from the Nell family that produced the Genex sire Dunlouse Red Native F207 as well as Dunlouse Nevis L441 and Dunlouse Nobleman P552.



**DUNLOUSE NIGELLA P541** - *The dam of Lots 51A and 51B.*

**52**

## ***Dunlouse Pippa Embryos***

Two Frozen Embryos

Betro of Classlochie	Rockie of Woodview
Dunlouse Jipsey Earl E161	Bethrothed 19th of Classlochie
#UK540196 300161	Bernardo of Classlochie
Dunlouse Jipsey Clova C095	Cannahars Jipsey Yoko Y485
Perlando of Tebworth	Black Jasimo of Tebworth
Dunlouse Pippa P544	Perlita of Tebworth
#UK540196 100544	Enoch of Holm Eden
Eversfield Pumpkin F378	Eversfield Princess C115

These special attraction embryos by Dunlouse Jipsey Earl E161 are from the featured Lot 3 donor Dunlouse Pippa P544, stemming from the Dunlouse foundation female Eversfield Pumpkin F378.



**DUNLOUSE RUTH H278** - *The dam of Lot 53.*



# ● **Dunlouse 100% Native Origin Aberdeen-Angus Embryos** ●



**EVERSFIELD PUMPKIN F378** - The dam of Lot 54.



**DUNLOUISE RED NELL K383** - The dam of Lot 55.

**55**

## **Dunlouse Red Nell Embryos**

Three Frozen Embryos

Prattle of Haymount  
Dunlouse Red Native F207  
#UK540196 700207 Eversfield Red Nena D252

Dunlouse Cup Bearer H283  
Dunlouse Red Nell K383  
#UK540196 100383 Dunlouse Nell G253

Ernest of Buchaam  
Particle of Haymount  
Dunlouse Excalibur Y070  
Budgehill Nena Z008  
Dunlouse Jipsey Earl E161  
Champagne Cherry Bee B117  
Evesund of Dupplin  
Eversfield Red Nena D252

These double-bred Nell embryos are backed by four consecutive generations of the best in red and red carrier sires ever used in the Dunlouse program through the Genex sires Dunlouse Red Native F207 and Dunlouse Cup Bearer H283, the twice Royal Highland Supreme Champion Evesund of Dupplin, and the Genex sire Dunlouse Excalibur Y070.

**56**

## **Dunlouse Red Nessie Embryos**

Six Frozen Embryos

Prattle of Haymount  
Dunlouse Red Native F207  
#UK540196 700207 Eversfield Red Nena D252

Dunlouse Engineer K358  
Dunlouse Red Nessie M494  
#UK540196 700494 Dunlouse Red Nell K383

Ernest of Buchaam  
Particle of Haymount  
Dunlouse Excalibur Y070  
Budgehill Nena Z008  
Evesund of Dupplin  
Dunlouse Emerald F205  
Dunlouse Cup Bearer H283  
Dunlouse Nell G253

A package of Red Angus embryos double-bred to the Nell family by the Genex sire Dunlouse Red Native F207. The dam is one of the most impressive red females ever produced at Dunlouse with a daughter selling as Lot 23.



**DUNLOUISE RED NESSIE M494** - The dam of Lot 56.

**53**

## **Dunlouse Ruth Embryos**

Five Frozen Embryos

Ashley Eular  
Dunlouse Cortachy Boy D137  
#UK540196 700137 Champagne Cherry Bee B117

Dunlouse Jipsey Earl E161  
Dunlouse Ruth H278  
#UK540196 100278 Ruby 5th of Newcroft

Eroco of Bankhead  
Ashley Eulona  
Ashley Elmigthy  
Cherry Bee W9 of Champagne  
Betro of Classlochie  
Dunlouse Jipsey Clova C095  
Wedderlie Evictor  
Ruby 4th of Newcroft

These Ruth embryos represent a blending of the Genex proven sires Dunlouse Cortachy Boy D137 and Dunlouse Jipsey Earl E161. The donor dam has taken her place as a leading matron in the Dunlouse herd, stemming from the Dunlouse foundation female Ruby 5th of Newcroft.

**54**

## **Dunlouse Pride Embryos**

Six Frozen Embryos

Dunlouse Jipsey Earl E161  
Dunlouse Cup Bearer H283  
#UK540196 600283 Champagne Cherry Bee B117

Enoch of Holm Eden  
Eversfield Pumpkin F378  
#UK369690 300378 Eversfield Princess C115

Betro of Classlochie  
Dunlouse Jipsey Clova C095  
Ashley Elmigthy  
Cherry Bee W9 of Champagne  
Cavetown Jet  
Eva of Holm Eden  
Bernardo of Classlochie  
Budgehill Pristine E W19

A unique opportunity to acquire embryos from the Dunlouse foundation Pride donor Eversfield Pumpkin F378.

These embryos are maternal siblings to the sale features who sell as Lots 3 and 13.

The sire served in the Genex AI Stud along with his two noted maternal brothers and his Pathfinder Sire.



## BRONZE OF EVESUND OF DUPPLIN - A UNIQUE OPPORTUNITY TO OWN A RARE PIECE OF ANGUS HISTORY

Tom and Joyce Rennie of Mosstonmuir Angus have kindly consented to sell their unique bronze of Evesund of Dupplin at our Celebration Sale, on Monday 26th June 2017, along with the certification of authenticity.

This is No 5 of a limited edition of 12 and so an extremely rare piece; this will be auctioned by United Auctions at Kingston.

Evesund of Dupplin was the Royal Highland Show Supreme Champion in 1978 and 1979, and Royal Show Supreme Champion in 1978. He is also the sire of Dunlouse Evesund Y069 and Dunlouse Excalibur Y070 and features in many of our cattle at the farm today.



**EVESUND OF DUPPLIN** - Twice Supreme Champion of the Royal Highland Agricultural Society Show and model bull of the breed in its homeland.





## THE DUNLOUISE TARTAN



Will be available for sale for the first time, on our lawn at the front of the house Monday 26th June 2017, our Native Sale day. Created by us under the expert guidance of Jo at the Strathmore Woollen Co in Forfar, this year.

Sale items to include ties, shawls, throws, dog collars and much more.



### DUNLOUISE TARTAN

Angus stretches from the BLUE of the North Sea to the WHITE topped snowy mountains. This Scottish countryside has lush GREEN grassland and PURPLE heather-covered hills.

Angus lies within the valley of Strathmore, famous for its soft fruit, including RASPBERRIES.

Enjoy our tartan, the Native Angus and our beautiful county, and thank you!

## BEAUTIFUL COUNTRY WEAR BY GAMMIES OF FORFAR

### ALSO FOR SALE AT THE DUNLOUISE INTERNATIONAL SALE



We are delighted that Jackie and Catherine are bringing a selection of their beautiful country wear to our sale, which you can find on our front lawn.

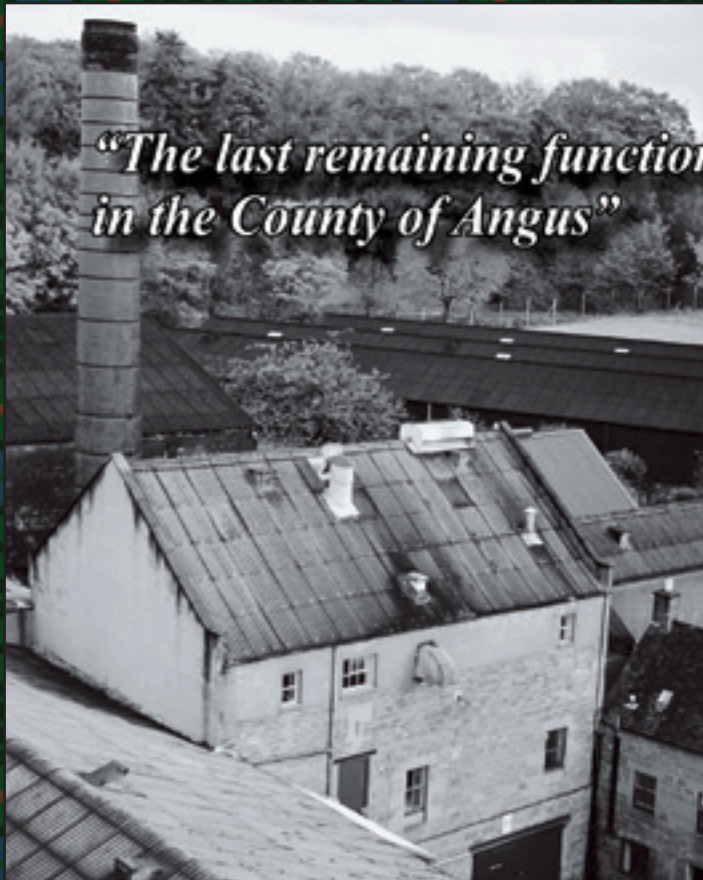


### GAMMIES ARE STOCKISTS OF:-

DUBARRY  
BARBOUR  
GANT  
AIGLE  
JOULES  
BRODIE CASHMERE  
NOBLE WILDE  
CHRYSALIS  
AMAZING WOMAN  
LAKSEN  
REALLY WILD CLOTHING  
SCHOFFEL  
FAIRFAX & FAVOR  
LE CHAMEAU  
ANNA LASCATA  
SOHO FURRIER  
R M WILLIAMS  
AIGLE  
JOULES  
BRODIE CASHMERE  
NOBLE WILDE  
CHRYSALIS  
AMAZING WOMAN



*"The last remaining functioning Scotch Whisky distillery  
in the County of Angus"*



# GLENCADAM

## HIGHLAND SINGLE MALT SCOTCH WHISKY

Glencadam Distillery first opened in 1825 in the ancient city of Brechin. It is now the last remaining functioning Scotch Whisky distillery in the 'kingdom' of Angus. Although over the centuries the distillery has changed ownership, the finest whisky making traditions have always been observed. Today, Glencadam is run under the expert and watchful eye of Doug Fitchett. Doug and his team oversee the remarkable journey of prime malted barley through milling, mashing and fermentation to the final distillation in one of the distillery's two unique-necked copper stills, unaltered since 1825.

ESTABLISHED

1825



ESTABLISHED

1825

[WWW.GLENCADAMWHISKY.COM](http://WWW.GLENCADAMWHISKY.COM)





# **The First International Sale of Dunlouse Native Aberdeen-Angus Cattle**

**1:30 P.M. Local Time  
Monday, June 26, 2017  
at Kingston Farm, Forfar, Angus, Scotland**

**You are invited to Scotland, for this stand-alone event,  
during the World Angus Forum**

## **OTHER SUGGESTED TOUR ATTRACTIONS:**

Thursday 22nd June 2017 Judging day at Highland Show, including machinery, crafts and MUCH more

Then build around that day including:

looking round Edinburgh including an open top bus tour, Royal yacht Britannia, exploring the streets, up the Royal Mile to the castle (outsides)

Drive North and join in the Open Weekend at Dunlouse (DD8 2RU) and explore the the county where our wonderful breed originated from, including:

- Aldbar castle (through the old archway, 200 meters and WALK left down the slope to the old church and Chalmers' gravestones; home of the Nells of Aldbar)
- Glencadam Distillery a few miles further on (prebook the free tour)
- Glamis Castle and the 50 minute tour, buy memorabilia, good lunch, home of the late Queen Mother. A very "doable" castle!
- Newtyle church yard to Hugh Watson's grave (our founding father of the breed), which is behind the church. Sunday 25th 10 am church service with Rev. Carleen Robertson - ALL welcome
- Drive into Glen Isla and do the loop past Forter Castle, taking in the scenery although Angus cattle are now few. Eat and stay at the Glen Isla Hotel - small and rustic
- Drive into Glen Clova to see more of Scotland, walk and eat at the Clova Hotel. Accommodation too.
- Drive into Glen Prosen to the Spott farm where the Jipsey family originated.
- Drive out of the glens into Kirriemuir, home of JM Barry and Peter Pan, Bon Scott statue and much more, for a small market town. Look behind Vissochi's ice-cream shop at the flag stone inscriptions, lunch at 88 degrees or one of the other coffee shops.
- Prebook your golf at Forfar, Carnoustie, Kirriemuir, St Andrews, etc.

Monday 26th June - Dunlouse Native International Sale of live cattle (including info for overseas flushing), embryos.

Moving on to Crieff Famous Grouse Whisky Experience, Pitlochry, House of Bruar (countrywear shopping, great food, a walk to the Bruar falls).



# **The First International Sale of Dunlouis Native Aberdeen-Angus Cattle**



***Cow/Calf Pairs • Bred Cows • Bred and Open Heifers • Embryos***



**1:30 P.M.  
Local Time**

**Monday,  
June 26,  
2017**

**at Kingston Farm, Forfar,  
Angus, Scotland**